

**TOWN OF FERDINAND, INDIANA**  
**ADA TRANSITION PLAN**

**INTRODUCTION**

The Americans with Disabilities Act (ADA) was enacted on July 26, 1990, and later amended effective January 1, 2009. As written and implemented, the ADA provides comprehensive civil rights protections to persons with disabilities in the areas of employment, state and local government services, access to public accommodations, transportation, and telecommunication. The ADA is a companion civil rights legislation to the Civil Rights Act of 1964 and Section 504 of the Rehabilitation Act of 1973. In order to be protected by the ADA, one must have a disability or have a relationship or association with an individual with a disability. An individual with a disability is defined by the ADA as a person who has a physical or mental impairment that substantially limits one or more major life activities, a person who has a history or record of such impairment, or a person who is perceived by others as having such impairment. The ADA, however, does not specifically name all of the impairments that are covered. The ADA is divided into five sections covering the following topics:

Title I: Employment

Title II: Public Services (and Transportation)

Title III: Public Accommodations (and Commercial Facilities)

Title IV: Telecommunications

Title V: Miscellaneous Provisions

Title II specifically prohibits state and local governments from discriminating against persons with disabilities or from excluding participation in or denying benefits of programs, services, or activities to persons with disabilities. It is under this title that this transition plan has been prepared. This transition plan is intended to outline the methods by which the Town will implement the non-discrimination policies described in Title II.

**TRANSITION PLAN DEVELOPMENT**

To ensure program accessibility for people with disability in the community, the Town has developed a Transition Plan, which is to be considered good practice.

**A. ADA Coordinator:**

Effective communication is essential to address all the complaints or concerns of all individuals. In order to keep maintaining the lines of communication open, and thereby ensuring effective communication between all parties, the Town has designated the Property Manager as the ADA coordinator. The ADA coordinator shall coordinate the Town's efforts to comply with and carry out its responsibilities under Title II of the ADA, including any investigation of any complaint communicated to the ADA coordinator. Such complaints may take the form of alleging noncompliance with ADA mandates or alleging any actions that would be prohibited under the ADA. The Town shall make available to all interested individuals the names, office address, and telephone number of the employee so designated and has adopted procedures for the prompt and equitable resolution of complaints. Every complaint must be directed in writing to the Clerk/Treasurer.

## **B. Notice / Grievance Procedure:**

The Grievance Procedure, attached hereto and made a part of this Plan, is intended to adhere to the standards outlined in the ADA. The procedure must be used by anyone who wishes to file a complaint alleging discrimination on the basis of disability in the provisions of services, activities, programs, or benefits provided by the Town. The complaint should be in writing and contain information about the alleged discrimination such as name, address, phone number of complainant and location, date and description of the problem. The Discrimination Complaint/Grievance Form, attached hereto and made a part of this Plan, must be used to lodge a complaint.

The ADA notice attached hereto and made a part of this Plan, will be posted at the Town Hall, on the Town website, and published in the Ferdinand News on an annual basis.

## **C. Self - Evaluation / Commitment / Schedule**

The Town of Ferdinand has conducted an evaluation of curb ramps and sidewalks using a Trimble GPS device recording conditions along with a picture in order to create an inventory of needed ADA repairs. The majority of curb ramps and sidewalks do not meet ADA requirements. The Town is committed to making all sidewalks and curb ramp areas accessible to all pedestrians including those with disabilities. The Town has conducted an evaluation of public buildings, and other public places owned by the Town for their compliance with ADA requirements in order to create an inventory of needed ADA repairs. The Town is committed to making structural changes to existing facilities to meet ADA program accessibility requirements, undertaking readily achievable barrier removal. The Town is further committed to retaining necessary professional services to provide sufficient technical expertise to properly assess the above-noted facilities. The Town is using a priority list in order to focus its scarce funding resources in a manner which balances costs, considers the potential immediate or long term benefits to disabled persons, and considers the benefit to the greatest number of disable persons. The Town Council states that it must use its discretion to allocate scarce resources to its ADA commitments along with its other budget needs. This will be accomplished through the following programs:

The Town has completed its ADA assessment, remediation cost estimate and priority list for curb ramps, sidewalks and facilities accessibility needs.

The Town has prepared design and engineering for 2017 projects and will complete construction of 2017 projects by December 31, 2017.

Based on available funds, subsequent design, engineering, and construction will take place in future years, as funding is available.

The Town Council currently commits at least \$29,000 dollars annually into its Sidewalk/Curb Replacement Program, specifically to address ADA remediation. A commitment is made to make 114 ramps compliant beginning 2014.as of the end of 2016, 29 are compliant Estimated completion will be 2030 using 2016 costs estimates exclusive of design and engineering costs. (Estimated construction cost for 2017 is \$1,525 per ramp) The Town has an inventory list for sidewalks with a total of (3.415 mile or 18,031 feet) with an estimated cost \$5.75 per square foot using 2017

costs exclusive of design and engineering costs. The Town Council's goal, contingent on available funds, is to complete sidewalk requirements by 2030. The Town has already made structural changes to existing facilities' entrances along with needed parking spaces to meet accessibility requirements.

The Town will, as part of its Plan, also will seek to make third parties responsible for ADA compliance with respect to any new construction prior to acceptance by the Town.

The Town anticipates that the Indiana Department of Transportation will be responsible for the assessment and remediation of any ADA deficiencies within State rights-of-way located within the Town.

#### **D. Self - Evaluation / Commitment / Schedule / Attachments**

Attachments #1 & #2 Ramp and Sidewalk Locations Compliant Updated 2017

Attachment # 1 ADA Ramp Locations

Attachment # 2 Sidewalk Locations Blue marked Sidewalks that are Compliant. Red marked Sidewalks are Non Compliant.

Attachments #3-#8 Completed 2014 ADA projects

Attachments #3 #4 #5 Town owned existing facilities 2014 projects for ADA compliance requirements change door swing and frame style, place concrete parking slab in front of Town Manager and Street Department offices to meet ADA standards for accessible design stripped with a symbol of accessibility and access loading zone (Funded by EDIT and CCI) estimate cost \$4,967, Place concrete parking slab by the west side entrance door on Fire Station #1 with a stripped symbol of accessibility and access loading zone (Funded by EDIT) estimate cost \$3,764, Remove existing concrete sidewalk and ramp by the Senior Citizens center activity room at 9<sup>th</sup> and Missouri street (Funded by EDIT) estimate cost \$3,940, Drafting and Engineering costs \$2,000.

Attachments #6 #7 #8 Sidewalk and Curb Ramps 2014 replacement projects for ADA compliance West Main and 8<sup>th</sup> Street (Funded by Sidewalk/Curb Replacement Program) estimate cost \$7,764, Sidewalk and Curb Ramps replacement West Main and 6<sup>th</sup> Street (Funded by Sidewalk/Curb Replacement Program) cost estimate \$5,565, Sidewalk and Curb Ramps replacement East Main and 5<sup>th</sup> Street (Funded 50/50 Replacement Program Town percentage EDIT) estimate cost \$6,718, Drafting and Engineering costs \$7,500.

Attachments #9 #10 #11 #12 #13 Completed 2015 ADA projects and Professional services.

#9 Sidewalks and ADA ramps 9<sup>th</sup> and Maryland estimate cost \$9,729.00

#10 Sidewalks and ADA ramps 400 block of Main Street estimate cost \$5,034.00

#11 Sidewalks and ramps 900 block of Missouri estimate cost \$5,500.00

#12 Three pages engineering and drawing services \$3,800.00

#13 Two pages Six ADA Drinking Fountains at Town Parks estimate \$29,000.00

Attachments #14 #15 #16#17 #18 Proposed 2016 ADA projects and Professional services.

- #14 Sidewalks and ADA ramps west side Virginia St. 8<sup>th</sup>to9<sup>th</sup> estimate cost \$14,800.00
- #15 Sidewalks and ADA ramps west side Virginia St. 9<sup>th</sup>to10<sup>th</sup> estimate cost \$3,400.00
- #16 Sidewalks and ADA ramps west side Virginia St. 10<sup>th</sup>to11 estimate cost \$7,600.00
- #17 Sidewalks and ADA ramps west side Virginia St. 11<sup>th</sup>to12 estimate cost \$9,500.00
- #18 Invoice for engineering and drawing services \$4,900.00

Attachments #19 #20 #21 #22 #23 were completed in 2016 due to the addition of ramps and sidewalks at 16<sup>th</sup> Street Virginia to State Road 162 see attachments #24 and #25 making #14 #15 #16 #17 #18 the priority list for 2017

- #19 Sidewalks and ADA ramps west side Virginia St.12<sup>th</sup>to13 estimate cost \$9,500.00
- #20 Sidewalks and ADA ramps west side Virginia St. 13<sup>th</sup>to14 estimate cost \$5,500.00
- #21 Sidewalks west side Virginia St. between 14<sup>th</sup> and16<sup>th</sup> estimate cost \$4,700.00
- #22 Sidewalks west side Virginia St. between 14<sup>th</sup> and16<sup>th</sup> estimate cost \$4,500.00
- #23 Sidewalks and ADA ramps west side Virginia St. between 14<sup>th</sup> to16<sup>th</sup>  
Estimate cost \$8,200.00

Attachments #14 #15 #16 #17#18 Proposed 2017 ADA projects and Professional services. If funds are available the alternate projects will be connect West 5<sup>th</sup> and Virginia to the 5<sup>th</sup> Street Park where new ADA ramps and sidewalk were installed. Park project attachments #26 and #27

- #14 Sidewalks and ADA ramps west side Virginia St. 8<sup>th</sup>to9<sup>th</sup> estimate cost \$14,800.00
- #15 Sidewalks and ADA ramps west side Virginia St. 9<sup>th</sup>to10<sup>th</sup> estimate cost \$3,400.00
- #16 Sidewalks and ADA ramps west side Virginia St. 10<sup>th</sup>to11 estimate cost \$7,600.00
- #17 Sidewalks and ADA ramps west side Virginia St. 11<sup>th</sup>to12 estimate cost \$9,500.00
- #18 Invoice for engineering and drawing services \$4,900.00

#### **Some ADA Project Upgrades that Indicates the Towns commitment to be Compliant**

<b>Project</b>	<b>Year</b>	<b>Estimate Cost</b>
Removed old and constructed new Restrooms at 18 <sup>th</sup> street Park	2013	\$76,456.39
Entrance Doors Town Hall	2013	\$10,740.17
Sidewalk/Curb replacement between west 7 <sup>th</sup> and 8 <sup>th</sup> street	2012	\$10,860.00
Town Hall Parking Lot Renovation	2012	\$111,827.23
Police Station Renovation	2012	\$115,433.73
Automated Entrance Door openers-senior center	2010	\$1,500.00
Access Road to Football/Soccer field 5 <sup>th</sup> street Park	2012	\$25,000.00
Wireless Scoreboards at 5 <sup>th</sup> street Park	2011	\$6,000.00
Play System at 5 <sup>th</sup> street Park	2004	\$124,197.00
Lighted Sidewalks to access play areas, shelter house,		

restrooms, concession and ball fields at 5 <sup>th</sup> street Park	2005	\$20,077.00
Removed old and constructed new Shelter house at 18 <sup>th</sup> street Park	2001	\$34,370.00
Play System at 18 <sup>th</sup> street Park	2002	\$110,336.70
Lighted Sidewalks to access play areas, shelter house, restrooms, concession and ball field at 18 <sup>th</sup> street Park	2003	\$29,465.00
Restrooms and shelter house upgrade for accessibility at 5 <sup>th</sup> street Park	2001	\$6,305.00
Installed new sidewalks around the 5 <sup>th</sup> street park football concession building for ADA accessibility	2015	\$2,488.88
Made a portable ADA ramp to use at fests or wherever it may be needed.	2015	\$308.23
Added Sidewalks and ADA ramps along the south side of the park property on west 5 <sup>th</sup> street.	2016	\$34,125.00
Added Sidewalks and ADA ramps along the south side of 16 <sup>th</sup> street Virginia to State Road 162	2016	\$11,940.00

#### **E. ADA Standards / Guidelines**

The standards are intended to apply to all construction undertaken within the Town. The Indiana Department of Transportation design guidelines and standards drawings will serve as the primary standards and guidelines for this plan with regard to streets and sidewalks. U.S. Department of Justice guidelines and standards drawings will serve as the primary standards and guidelines for this Plan with regard to buildings and other public places owned by the Town. Other standards, if necessary, will be applied at the discretion of the ADA coordinator.

#### **IMPLEMENTATION**

The Town intends to implement this Transition Plan effective the date of this document. Not only does the Town commit to following the guidelines set forth in this Transition Plan but it also commits to actively revising and amending this document as new information is discovered.

**Town of Ferdinand**  
**Grievance Procedure under**  
**The Americans with Disabilities Act**

This Grievance Procedure is established to meet the requirements of the Americans with Disabilities Act of 1990 ("ADA"). It may be used by anyone who wishes to file a complaint alleging discrimination on the basis of disability in the provision of services, activities, programs, or benefits by the Town of Ferdinand. The Town of Ferdinand's Personnel Policy governs employment-related complaints of disability discrimination.

The complaint should be in writing on the Town's "Discrimination Complaint/Grievance Form", and contain information about the alleged discrimination such as name, address, phone number of complainant and location, date, and description of the problem. Alternative means of filing complaints, such as personal interviews or a tape recording of the complaint, will be made available for persons with disabilities upon request.

The complaint should be submitted by the grievant and/or his/her designee as soon as possible but no later than 60 calendar days after the alleged violation to:

Ferdinand ADA Coordinator  
2065 Main Street  
Ferdinand, IN 47532

Within 15 calendar days after receipt of the complaint, the Ferdinand ADA Coordinator or his/her designee will meet with the complainant to discuss the complaint and the possible resolutions. Within 15 calendar days of the meeting, the ADA Coordinator or his/her designee will respond in writing, and where appropriate, in a format accessible to the complainant, such as large print or audiotape. The response will explain the position of the Town of Ferdinand and offer options for substantive resolution of the complaint.

If the response by the ADA Coordinator or his/her designee does not satisfactorily resolve the issue, the complainant and/or his/her designee may appeal the decision to the Ferdinand ADA Grievance Committee within 30 calendar days after receipt of the response, by notifying the Ferdinand Clerk-Treasurer or his/her designee.

Within 15 calendar days after receipt of the appeal, the Ferdinand ADA Grievance Committee will meet with the complainant to discuss the complaint and possible resolutions. Within 15 calendar days after the meeting, the Clerk-Treasurer or his/her designee will respond in writing, and, where appropriate, in a format accessible to the complainant, with a final resolution of the complaint.

If the response of the ADA Grievance Committee does not satisfactorily resolve the issue, the complainant and/or his/her designee may appeal the decision to the Ferdinand Town Council within 30 calendar days after receipt of the response, by notifying the Ferdinand Clerk-Treasurer or his/her designee.

Within 15 calendar days after receipt of appeal, the Ferdinand Town Council will meet with the complainant to discuss the complaint and possible resolutions. Within 15 calendar days after the meeting, the Clerk-Treasurer or his/her designee will respond in writing, and, where appropriate, in a format accessible to the complainant, with a final resolution of the complaint.

All written complaints received by the ADA Coordinator or his/her designee, appeals to the ADA Grievance Committee, and Town Council and responses from these two officials will be retained by the Town of Ferdinand for at least three years.

Duly adopted this \_\_\_\_\_ day of \_\_\_\_\_, 2015.

FERDINAND TOWN COUNCIL

\_\_\_\_\_  
KENNETH J. SICARD, President

\_\_\_\_\_  
RONALD J. WEYER, Member

\_\_\_\_\_  
DEBRA JOHNSON, Member

ATTEST:

\_\_\_\_\_  
BEVERLY A. SCHULTHISE, Clerk-Treasurer



# **ATTACHMENTS**

**TITLE II OF THE AMERICANS WITH DISABILITIES ACT (ADA)**

**DISCRIMINATION COMPLAINT/GRIEVANCE FORM**

Please complete this form in black ink or type. Alternate means of filing a Complaint/Grievance, such as a personal interview or audio recording, will be made available upon request to the City or Town of \_\_\_\_\_, ADA Coordinator.

Complainant Name: \_\_\_\_\_

Complainant Address: \_\_\_\_\_

City, State, Zip Code: \_\_\_\_\_

Telephone Number: \_\_\_\_\_

Complete the information below IF the Person discriminated against is not the Complainant:

Name: \_\_\_\_\_

Address: \_\_\_\_\_

City, State, Zip Code: \_\_\_\_\_

Telephone Number: \_\_\_\_\_

Date and Time of Alleged Discrimination: \_\_\_\_\_

Location of Alleged Discrimination: \_\_\_\_\_

Please describe the act(s) of discrimination providing the Name(s) where possible of individuals whom allegedly discriminated (if applicable,) or City Facilities in violation of the Americans with Disabilities Act (ADA). Attach additional pages if necessary:

What type of Corrective Action is the Complainant Seeking:

---

---

---

---

---

---

---

Has the Complaint been filed with another Federal, State, or Local Civil Rights Agency or Court?

Yes: \_\_\_\_\_ No: \_\_\_\_\_

If yes, with what Agency or Court: \_\_\_\_\_

Contact Person: \_\_\_\_\_

Address: \_\_\_\_\_

City, State, Zip Code: \_\_\_\_\_

Contact Telephone Number: \_\_\_\_\_

Date Filed: \_\_\_\_\_

Does Complainant intend to File with another Agency or Court: Yes: \_\_\_\_\_ No: \_\_\_\_\_

Agency or Court: \_\_\_\_\_

Address: \_\_\_\_\_

City, State, Zip Code: \_\_\_\_\_

Contact Telephone Number: \_\_\_\_\_

Additional Space for Answers: \_\_\_\_\_

---

---

---

Signature of Complainant: \_\_\_\_\_

Printed/Typed Name of Complainant: \_\_\_\_\_

Date Form Completed: \_\_\_\_\_

PLEASE RETURN COMPLETED FORM TO:

ADA Coordinator, \_\_\_\_\_

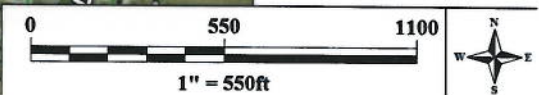
For ADA Coordinator Use Only:

Date Completed Form Received \_\_\_\_\_



**ADA road**  
**Compliance:**  
■ compliant  
■ non-compliant

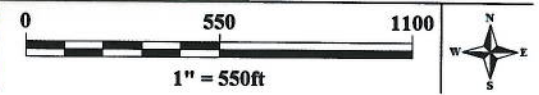
Roads  
*Attachment #1*



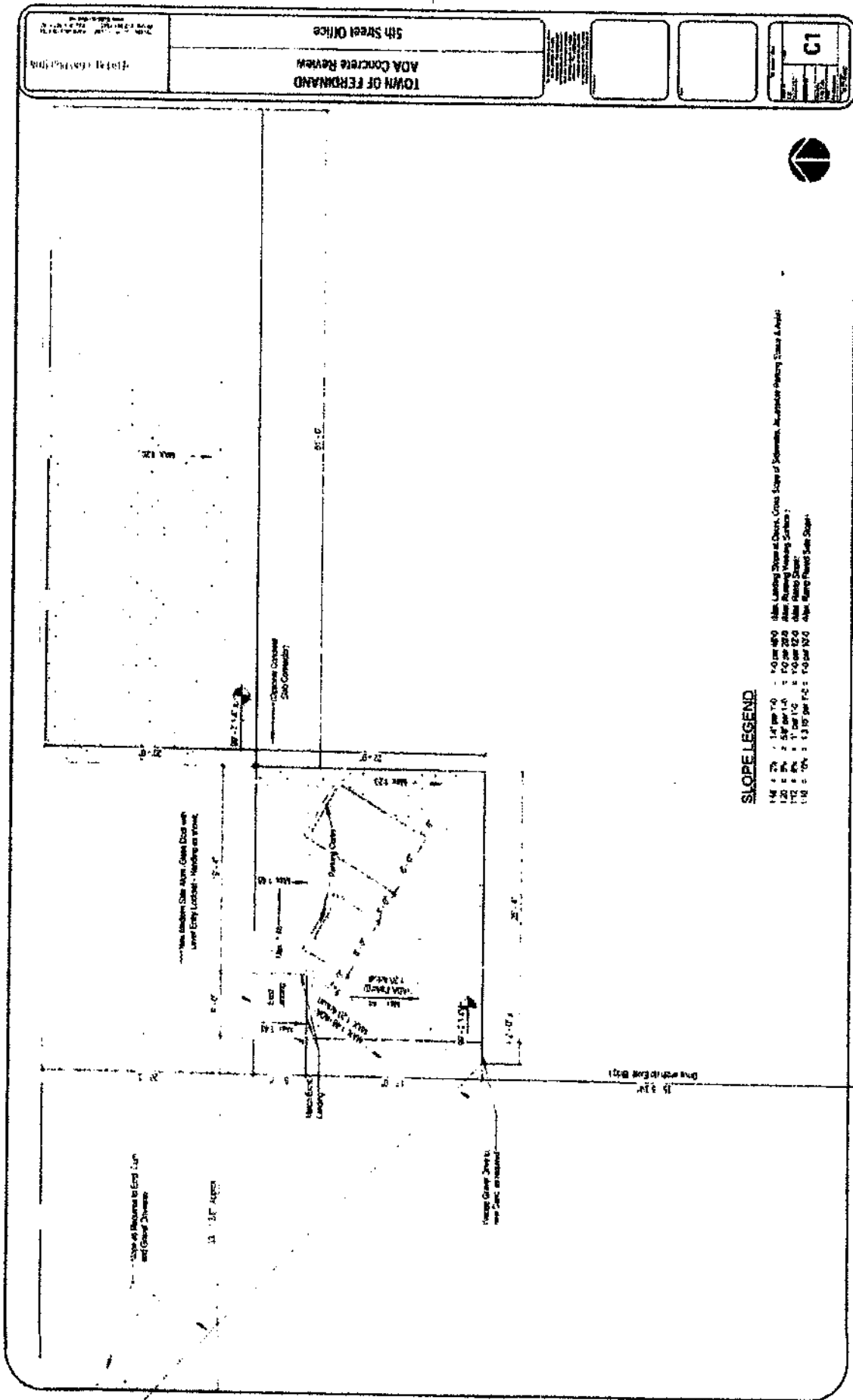


**Sidewalks**  
 Feature Name:  
 — Compliant Sides  
 — Non-compliant s  
 — Roads

*Attachment #2*



#3



**SLOPE LEGEND**

- 1/4" = 1' 1/4" per 1/4"
- 1/2" = 1' 1/2" per 1/2"
- 3/4" = 1' 3/4" per 3/4"
- 1" = 1' per 1"
- 1 1/4" = 1' 1/4" per 1 1/4"
- 1 1/2" = 1' 1/2" per 1 1/2"
- 1 3/4" = 1' 3/4" per 1 3/4"
- 2" = 1' per 2"
- 2 1/4" = 1' 1/4" per 2 1/4"
- 2 1/2" = 1' 1/2" per 2 1/2"
- 2 3/4" = 1' 3/4" per 2 3/4"
- 3" = 1' per 3"

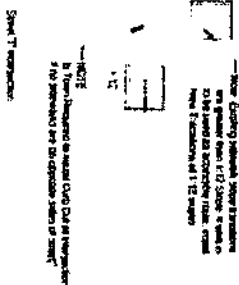
**TOWN OF FERDINAND**  
ADA Concrete Review

5th Street Office

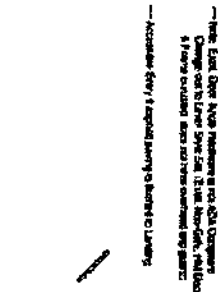
3

#3

3rd Street



Carolina St.



4th Street

1 Fire Station  
1/16" = 1'-0"



			<p>TOWN OF FERDINAND          ADA Concrete Review</p> <p>3rd Street Fire Station</p>	<p>DATE: 10/18/16</p> <p>BY: [Signature]</p>
--	--	--	--	--



#3

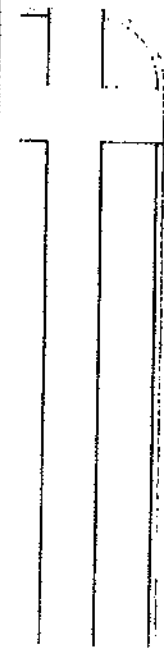
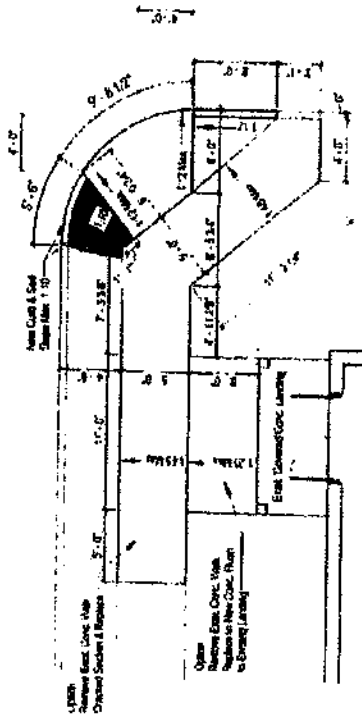
ADRIAN CONSTRUCTION, INC. 3030 12/10/2013	TOWN OF FERRISAND ADA Concrete Review			C3
	Senior Citizens Ct			



Missouri St

9th Street

Relative East, Neutral Orientation



#4

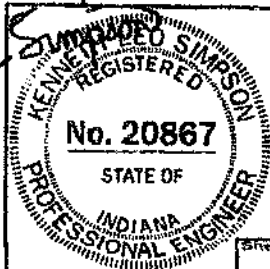
# Town of Ferdinand Sidewalk Repair - 2 locations Main & 8th Streets and at Main & 6th Streets Ferdinand, Indiana

**Engineer Associates, Inc.**  
645 Main Street, #201  
Tell City, Indiana 47588  
Telephone: 812-847-1100  
Cell: 812-719-9345  
Indy phone: 317-841-3113  
KLSimpsonPE@Comcast.net

Kenneth Leo Simpson, P.E.

Drawn: KLS  
Drawing Date: 12/12/12  
Revision Date:  
3/13/13 Rework grades at  
North corner, Change Stand's.

**Plot Information:**  
File Name: Ferdinand Sidewalk #2  
Plot Date:  
CAD Operator: KLS

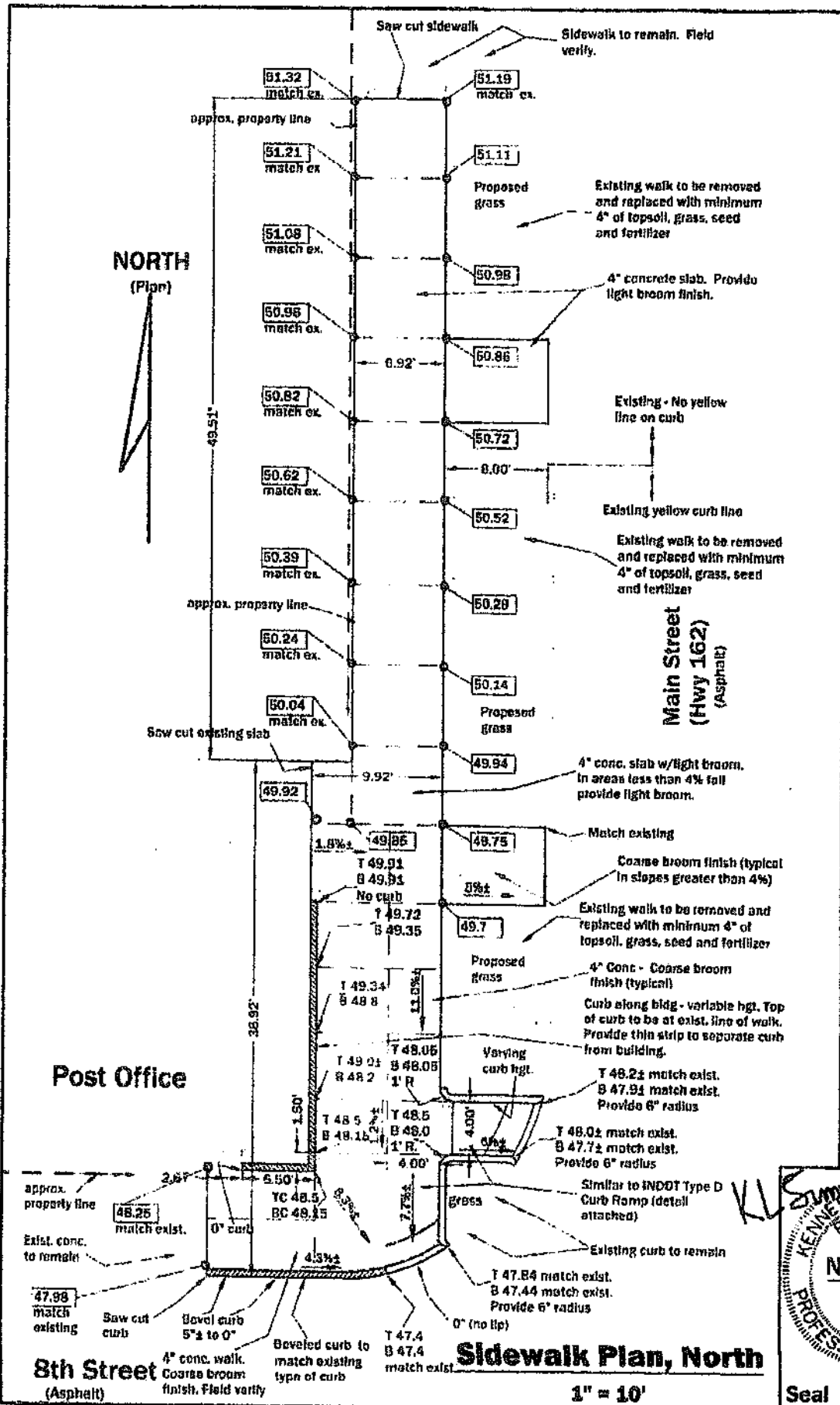


12-30

Sheet number

C1

Seal



**NORTH**  
(Plan)

**Post Office**

**8th Street**  
(Asphalt)

## Sidewalk Plan, North

1" = 10'

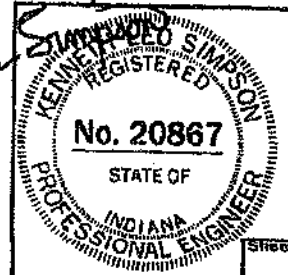
#4

# Town of Ferdinand Sidewalk Repair - 2 locations Main & 8th Streets and at Main & 6th Streets Ferdinand, Indiana

**Engineer Associates, Inc.**  
645 Main Street, #201  
Tell City, Indiana 47586  
Telephone: 812-547-1100  
Cell: 812-719-8345  
Indy phone: 317-841-3113  
KLSimpsonPE@Comcast.net  
**Kenneth Leo Simpson, P.E.**

Drawn: KLS  
Drawing Date: 12/12/12  
Revision Date:  
3/13/13 Rework grades at  
North corner. Change Stand's.

**Plot Information:**  
File Name: Ferdinand Sidewalk #2  
Plot Date:  
CAD Operator: KLS

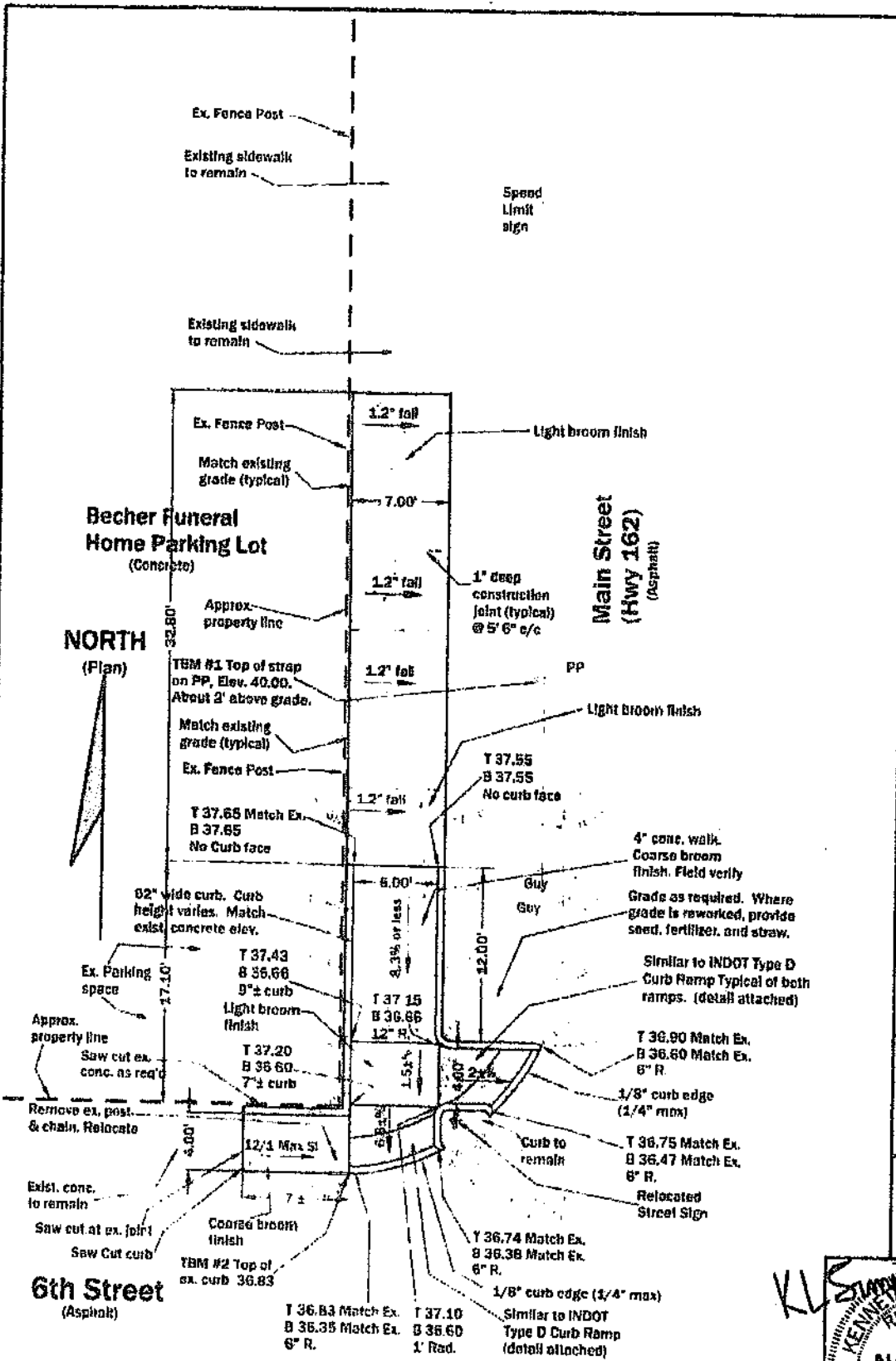


12-30

Sheet number

**C2**

Seal



## Sidewalk Plan, South

1" = 20'

#5

**Town of Ferdinand**  
**Proposed Sidewalks and ADA Ramps**  
**500 Block of Main Street (State Highway 162) - East Side**  
**Ferdinand, Indiana**

**Engineer Associates, Inc.**  
645 Main Street, #201  
Tell City, Indiana 47586  
Telephone: 812-547-1100  
Cell: 812-719-8346  
Indy phone: 317-841-3113  
KLSimpsonPE@Comcast.net

**Kenneth Leo Simpson, P.E.**

Drawn: KLS  
Drawing Date: 3/17/14  
Revision Date:

**Plot Information:**  
File Name: Ferdinand Sdwk.500  
Plot Date:  
GAD Operator: KLS

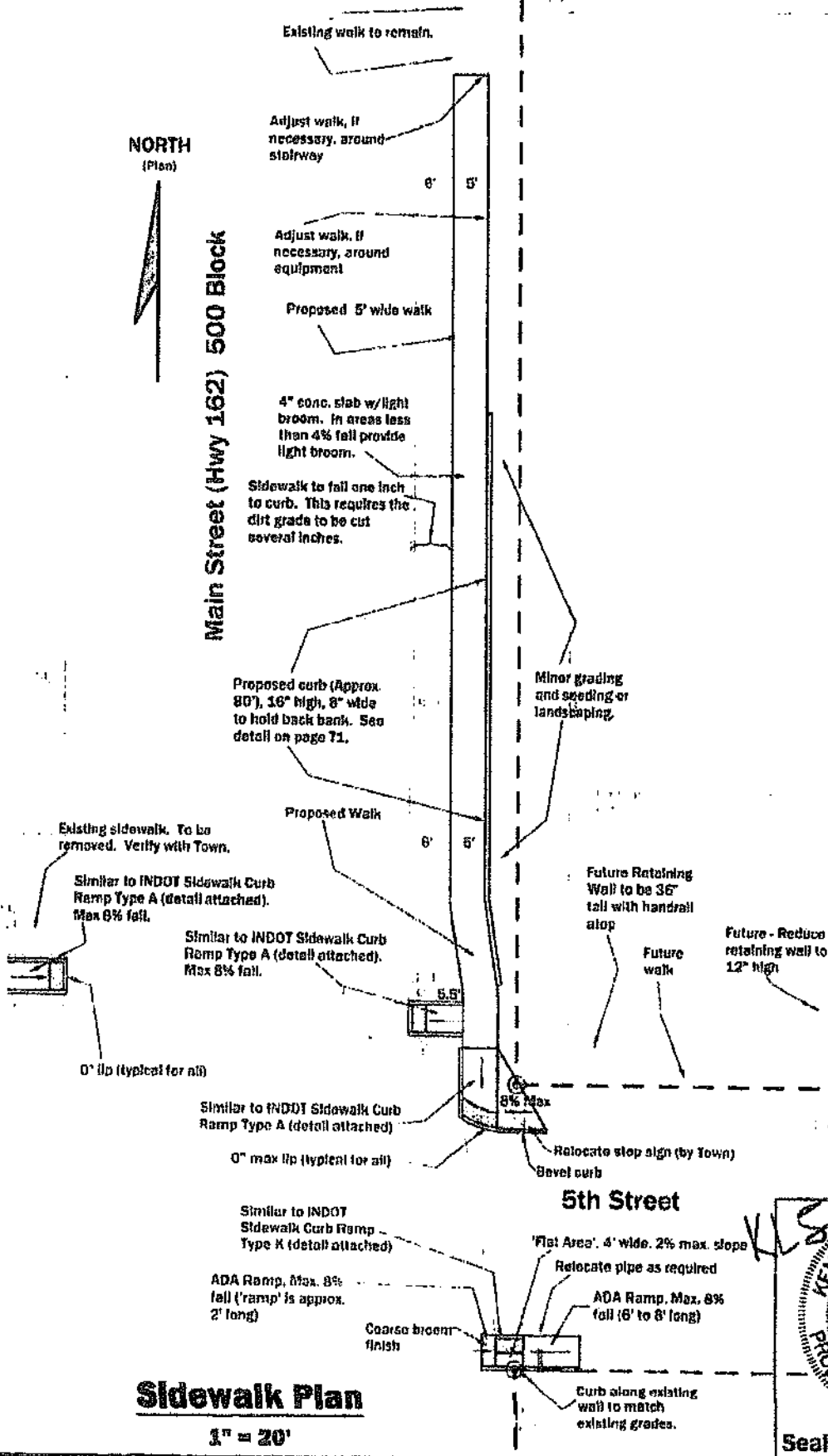


Sheet number

**C1**

**NORTH**  
(Plan)

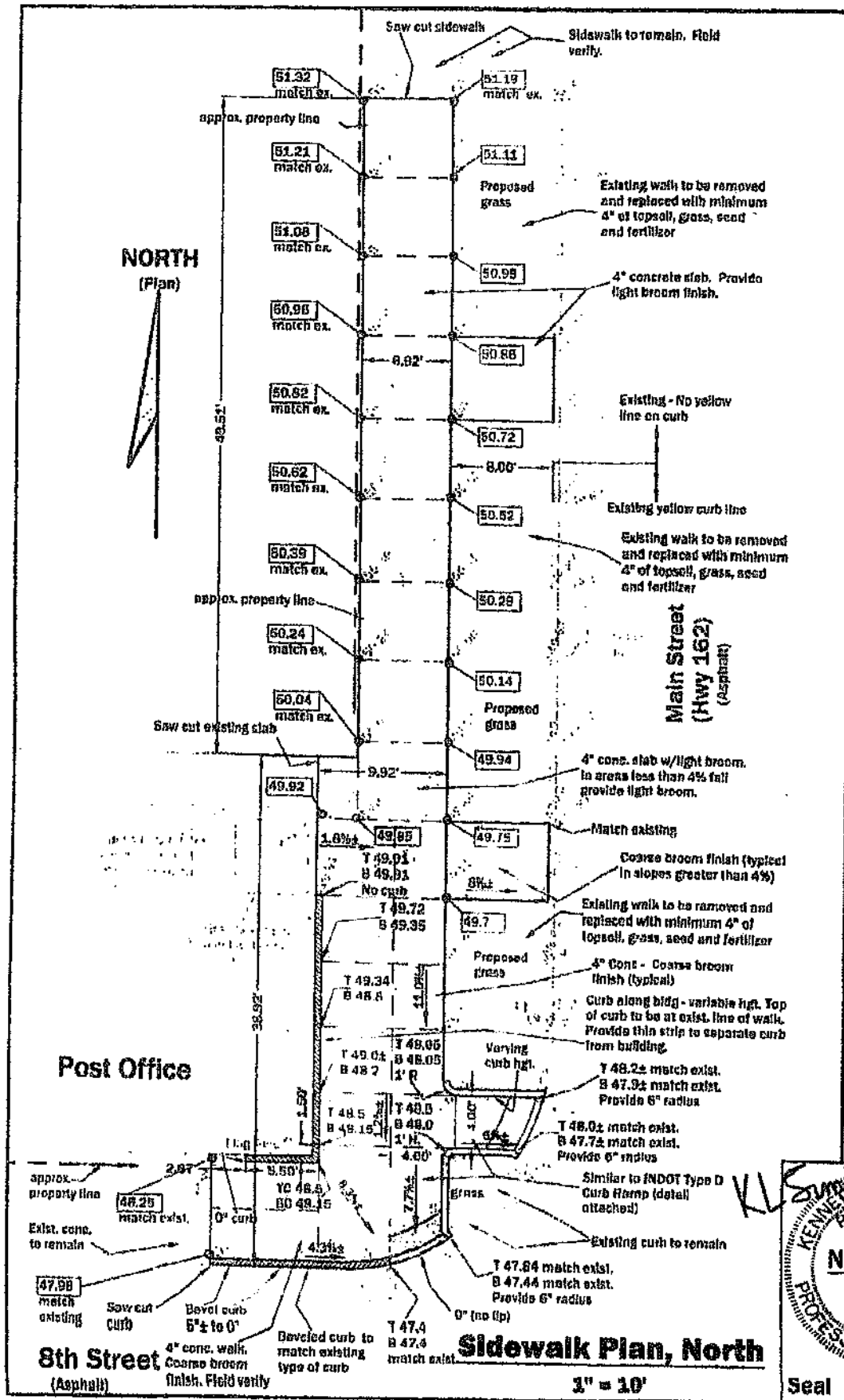
**Main Street (Hwy 162) 500 Block**



**Sidewalk Plan**

1" = 20'

Seal



# 6

**Town of Ferdinand Sidewalk Repair - 2 locations**  
**Main & 8th Streets and at Main & 6th Streets**  
**Ferdinand, Indiana**

**Engineer Associates, Inc.**  
 645 Main Street, #201  
 Tell City, Indiana 47588  
 Telephone: 812-647-1100  
 Cell: 812-719-8346  
 Indy phone: 317-941-3119  
 KLSimpsonPE@Comcast.net

Kenneth Leo Simpson, P.E.

Drawn: KLS  
 Drawing Date: 12/12/12  
 Revision Date:  
 3/13/13 Rework grades at  
 North corner. Change Stand's.

**Plot Information:**  
 File Name: Ferdinand Sidewalk #2  
 Plot Date:  
 CAD Operator: KLS

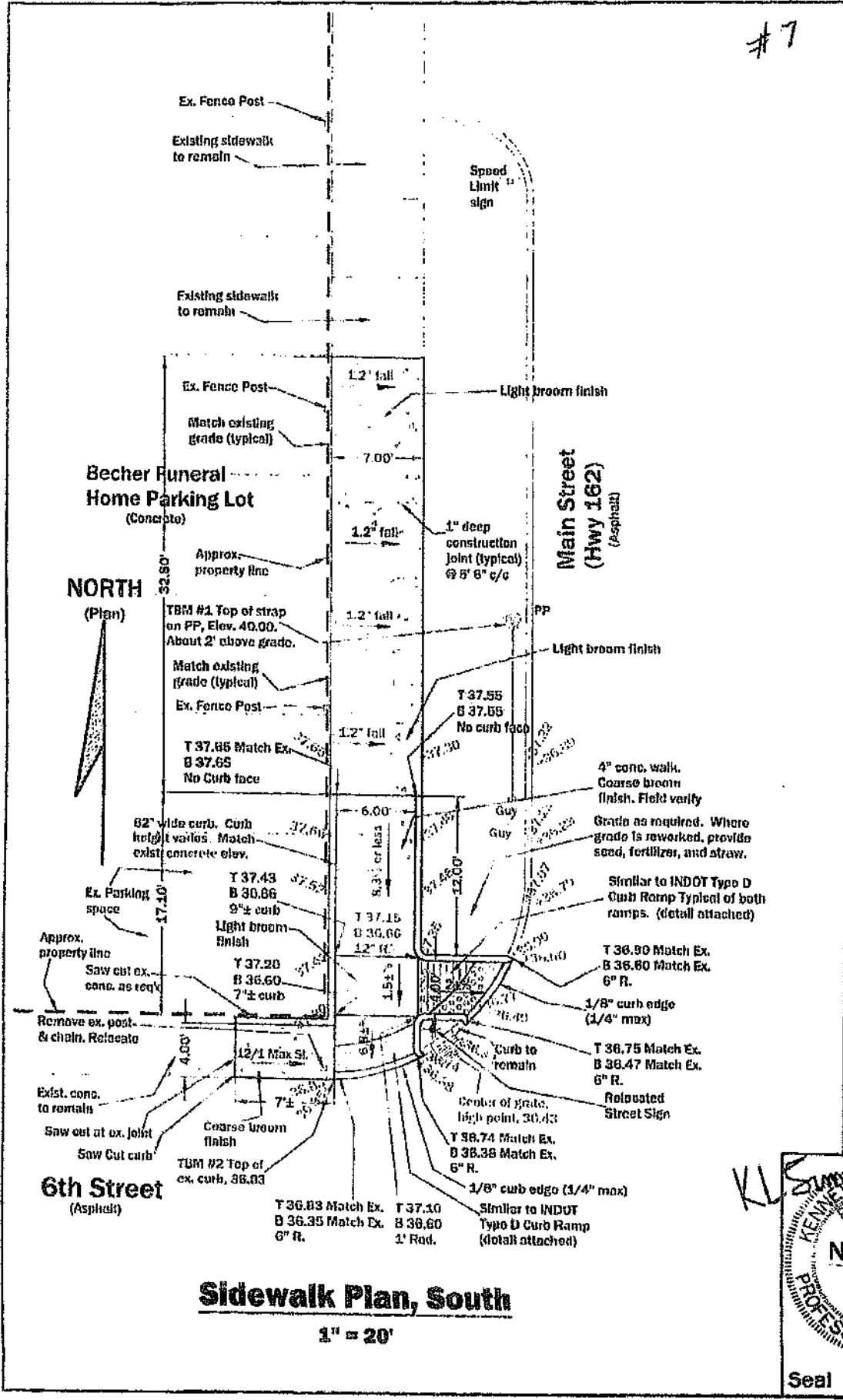


12-30

Sheet number  
**C1**

Seal

#7



### Sidewalk Plan, South

1" = 20'

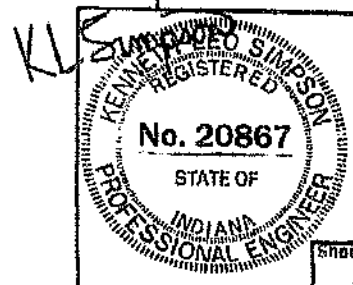
**Town of Ferdinand Sidewalk Repair - 2 locations**  
 Main & 8th Streets and at Main & 6th Streets  
 Ferdinand, Indiana

**Engineer Associates, Inc.**  
 646 Main Street, #201  
 Tell City, Indiana 47586  
 Telephone: 812-547-1100  
 Cell: 812-719-8346  
 Indy phone: 317-841-3113  
 KLSimpsonPE@Comcast.net

**Kenneth Leo Simpson, P.E.**

Drawn: KLS  
 Drawing Date: 12/12/12  
 Revision Date:  
 3/13/13 Rework grades at  
 North corner. Change Stand's.

**Plot Information:**  
 File Name: Ferdinand Sidewalk #2  
 Plot Date:  
 CAD Operator: KLS



Seal

Sheet number  
**C2**

12-30

**Town of Ferdinand**  
**Proposed Sidewalks and ADA Ramps**  
**500 Block of Main Street (State Highway 162) - East Side**  
**Ferdinand, Indiana**

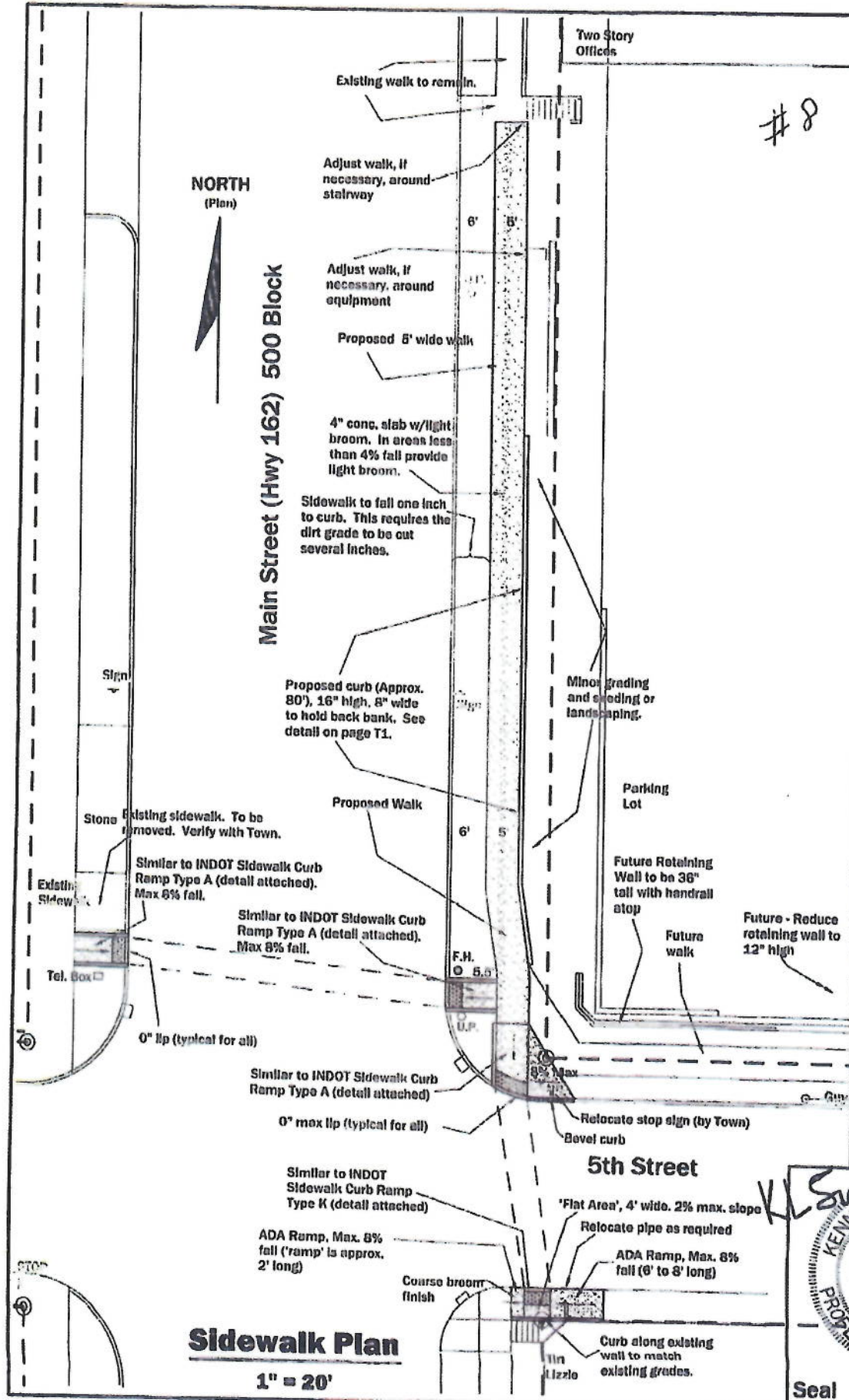
**Engineer Associates, Inc.**  
 645 Main Street, #201  
 Tell City, Indiana 47586  
 Telephone: 812-547-1100  
 Cell: 812-719-8345  
 Indy phone: 317-841-3113  
 KLSimpsonPE@Comcast.net

**Kenneth Leo Simpson, P.E.**  
 Drawn: KLS  
 Drawing Date: 3/17/14  
 Revision Date:

**Plot Information:**  
 File Name: Ferdinand Sdwk.500  
 Plot Date:  
 CAD Operator: KLS

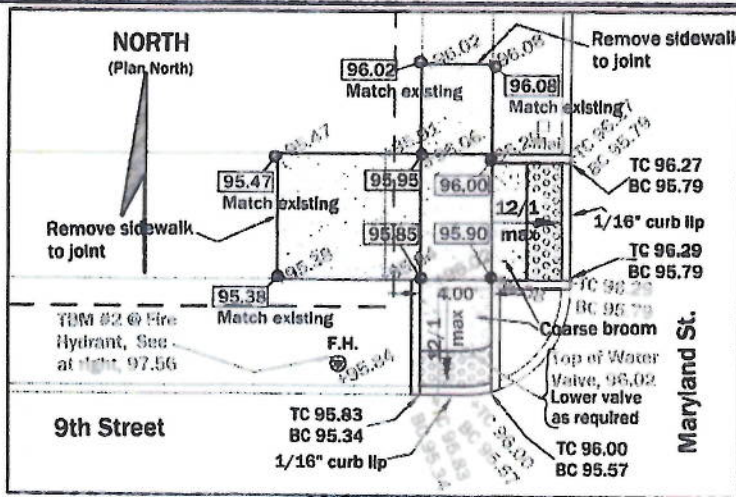


**14-07**  
 Sheet number  
**C1**

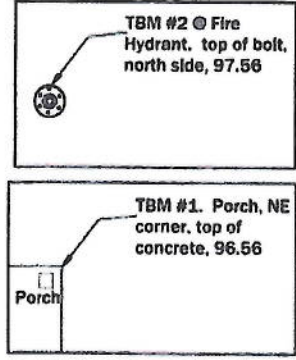


**Sidewalk Plan**  
 1" = 20'

Seal



**Plan (north side of street)**  
1" = 10'



**TBM's**

**Town of Ferdinand**  
Proposed Sidewalks and ADA Ramps  
9th and Maryland  
Ferdinand, Indiana

**Engineer Associates, Inc.**  
645 Main Street, #201  
Tell City, Indiana 47586  
Telephone: 812-547-1100  
Cell: 812-719-8345  
Indy phone: 317-841-3113  
KLSimpsonPE@Comcast.net  
  
Kenneth Leo Simpson, P.E.

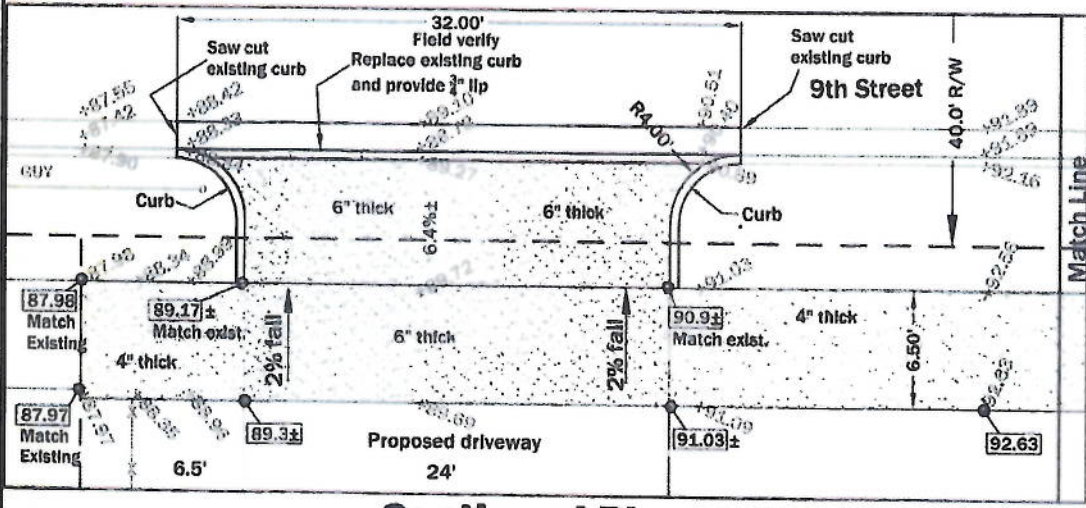
Drawn: KLS  
Drawing Date: 4/3/15  
Revision Date:

**Plot Information:**  
File: Ferdinand.9th.Maryland  
Plot Date:  
CAD Operator: KLS

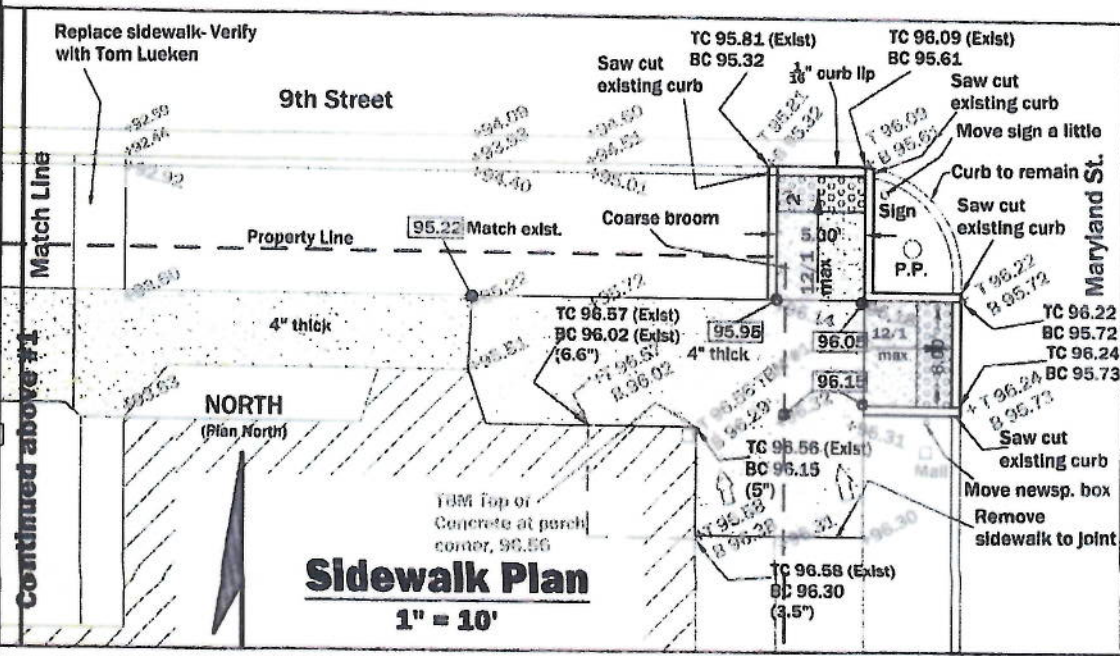


Seal Sheet number  
**C1 of 1**

Continued from below #1



**Continued Plan**  
1" = 10'

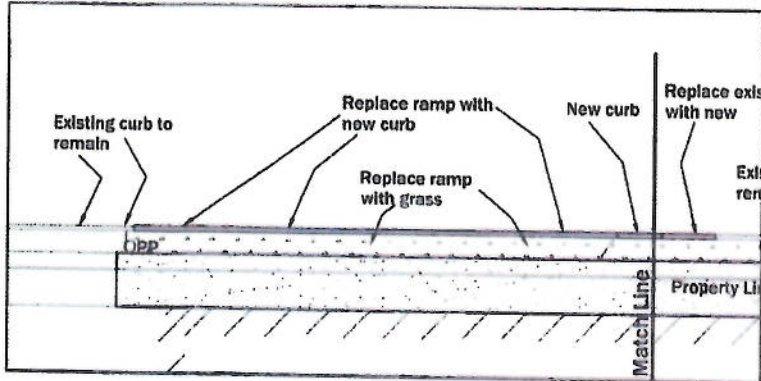


**Sidewalk Plan**  
1" = 10'

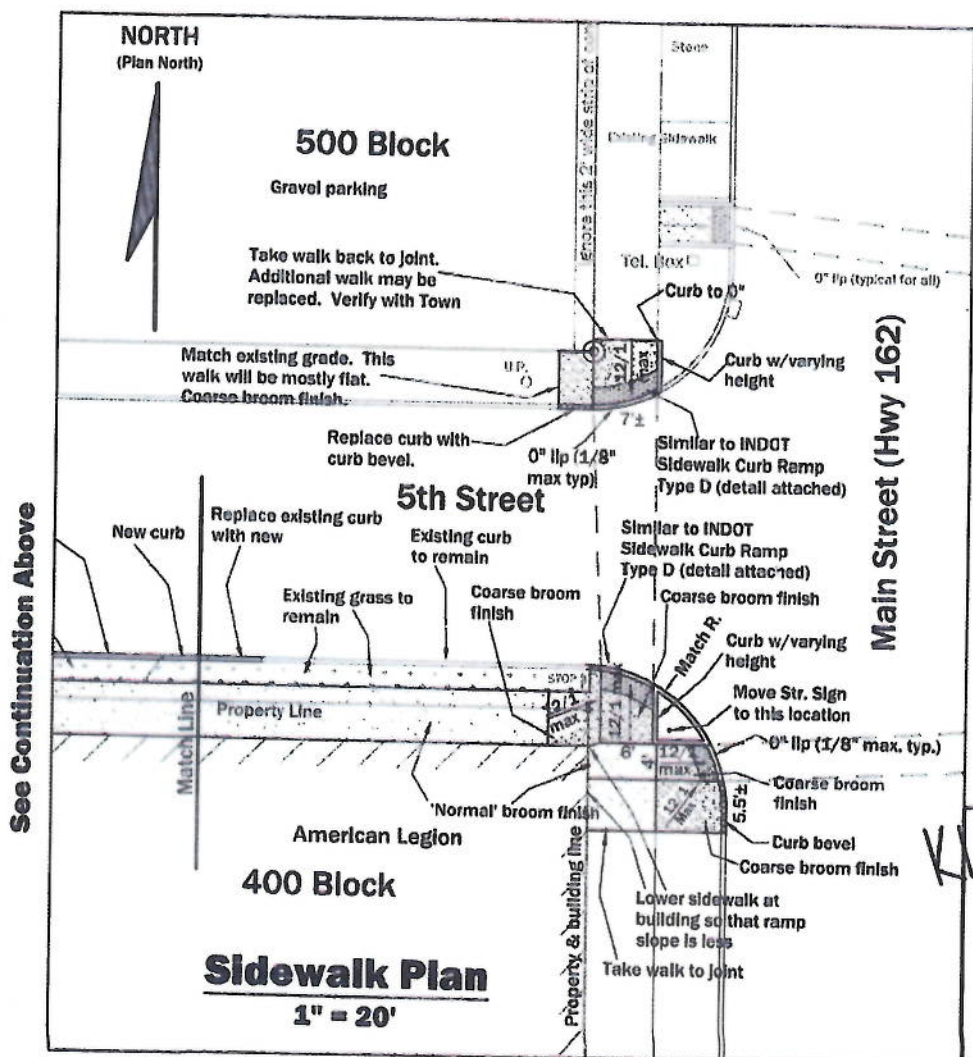
Continued above #1

15-04





See Continuation Below



See Continuation Above

**Town of Ferdinand**  
**Proposed Sidewalks and ADA Ramps**  
**Near American Legion**  
**400 Block of Main Street (State Highway 162) - West Side**  
**Ferdinand, Indiana**

**Engineer Associates, Inc.**  
 645 Main Street, #201  
 Tell City, Indiana 47586  
 Telephone: 812-547-1100  
 Cell: 812-719-8345  
 Indy phone: 317-841-3113  
 KLSimpsonPE@Comcast.net

Kenneth Leo Simpson, P.E.

Drawn: KLS  
 Drawing Date: 2/22/15  
 Revision Date:

**Plot Information:**  
 File Name: Ferd. Sdwk, Am. Legion  
 Plot Date:  
 CAD Operator: KLS



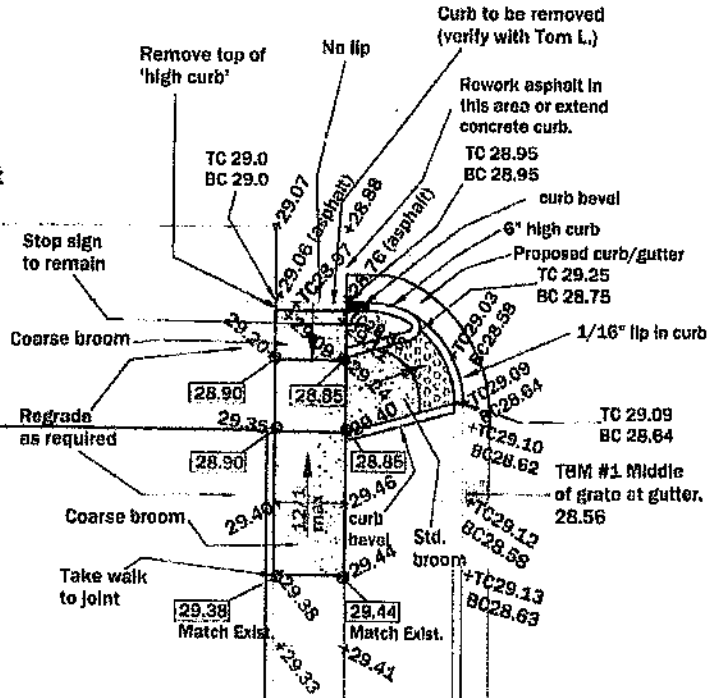
15-04

Sheet number

Seal

**C1**

10th Street



Stop sign to remain

Coarse broom

Regrade as required

Coarse broom

Take walk to joint

28.90

28.90

29.40

29.38

29.38

28.85

28.85

29.40

29.44

29.44

28.80

28.85

29.40

29.44

29.41

28.85

28.85

29.40

29.44

29.41

28.80

28.85

29.40

29.44

29.41

28.85

28.85

29.40

29.44

29.41

NORTH  
(Plan North)



Existing Walk

900 Block

Property Line

Missouri Street

Match Line

### Sidewalk Plan

1" = 10'

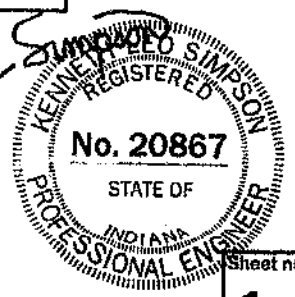
**Town of Ferdinand**  
**900 Block of Missouri**  
**Ramps and sidewalks**  
**Ferdinand, Indiana**

**Engineer Associates, Inc.**  
 645 Main Street, #201  
 Tell City, Indiana 47586  
 Telephone: 812-547-1100  
 Cell: 812-719-8345  
 Indy phone: 317-841-3113  
 KLSimpsonPE@Comcast.net

Kenneth Leo Simpson, P.E.

Drawn: KLS  
 Drawing Date: 4/6/15  
 Revision Date:

**Plot Information:**  
 File: Ferdinand.900 Block.Missouri  
 Plot Date:  
 CAD Operator: KLS



15-05

Seal

Sheet number  
**1 of 2**

NORTH  
(Plan North)



Property Line

Match Line

Missouri Street

Existing Walk

Alley

Replace walk to joint Match existing walk.

Place new walk 1/16" higher than existing curb

Proposed 4" walk. Joints @ 4' c/c.

Place new slab 1/16" higher than existing curb

Proposed 6" slab

Match Existing grades.

**Town of Ferdinand**  
900 Block of Missouri  
Ramps and sidewalks  
Ferdinand, Indiana

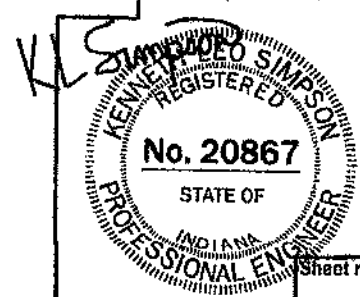
**Engineer Associates, Inc.**  
645 Main Street, #201  
Tell City, Indiana 47586  
Telephone: 812-547-1100  
Cell: 812-719-8345  
Indy phone: 317-841-3113  
KLSimpsonPE@Comcast.net

Kenneth Leo Simpson, P.E.

Drawn: KLS  
Drawing Date: 4/3/15  
Revision Date:

**Plot Information:**  
File: Ferdinand.900 Block.Missouri  
Plot Date:  
CAD Operator: KLS

**Sidewalk Plan**  
1" = 10'



15-05

Seal

Sheet number

2 of 2

**ENGINEER ASSOCIATES, Inc.**

*Since 1990*

645 Main Street, Suite 201  
Tell City, Indiana 47586

(812) 547-1100  
e-mail:

Kenneth Leo Simpson, P.E.  
P.E. License in Indiana & Kentucky  
klsimpsonpe@comcast.net

April 7, 2015

Town of Ferdinand  
2065 Main Street  
Ferdinand, IN 47532

Attn: Tom Lueken

Re: Curb Ramps  
Near St. Ferdinand Catholic Church, 9<sup>th</sup> and Maryland  
Ferdinand, IN

**INVOICE**

For engineering services on the referenced project, performed during the period January 26, 2015 through April 7, 2015 to provide a design for the referenced project, including creating page C1 of 1, shooting grades, and associated work.

**Please remit \$575.00**

Net due 30 days

#12

**ENGINEER ASSOCIATES, Inc.**

*Since 1990*

645 Main Street, Suite 201  
Tell City, Indiana 47586

(812) 547-1100  
e-mail:

Kenneth Leo Simpson, P.E.  
P.E. License in Indiana & Kentucky  
klsimpsonpe@comcast.net

April 7, 2015

Town of Ferdinand  
2065 Main Street  
Ferdinand, IN 47532

Attn: Tom Lucken

Re: Sidewalk submittal to INDOT  
Near American Legion, 5<sup>th</sup> and Main  
Ferdinand, IN

**INVOICE**

For engineering services on the referenced project, performed during the period January 26, 2015 through April 7, 2015 to provide a design for the referenced project, including creating pages T1 and C1, attaching five INDOT drawings, researching the bond information, submittal to INDOT, acceptance from INDOT, and associated work.

**Please remit \$2,600.00**

Net due 30 days

**ENGINEER ASSOCIATES, Inc.**

Since 1990

645 Main Street, Suite 201  
Tell City, Indiana 47586

(812) 547-1100  
e-mail:

Kenneth Leo Simpson, P.E.  
P.E. License in Indiana & Kentucky  
klsimpsonpe@comcast.net

April 7, 2015

Town of Ferdinand  
2065 Main Street  
Ferdinand, IN 47532

Attn: Tom Lueken

Re: Curb Ramps and sidewalks  
Near Police Station, 10<sup>th</sup> and Missouri  
Ferdinand, IN

**INVOICE**

For engineering services on the referenced project, performed during the period January 26, 2015 through April 7, 2015 to provide a design for the referenced project, including creating pages 1 of 2 and 2 of 2, shooting grades, measuring, and associated work.

**Please remit \$625.00**

Net due 30 days



# model 3380FR

Pedestal-Mounted Drinking Fountain

## FEATURES & BENEFITS

### BUBBLER HEAD

Polished chrome-plated brass bubbler head with an integral basin shank and inserted roll pin adds vandal resistance strength to the design, and the shielded angled stream orifice produces a steady sanitary source of water.

### GALVANIZED FINISH

Tough galvanized coating is ideal for areas where vandalism and graffiti is an issue. Due to the galvanizing process, appearance of the finish may vary.

### CONSTRUCTION

Heavy-duty 11 gauge galvanized steel pedestal with a green powder-coat finish incorporates a rounded tube design for an aesthetically pleasing design, and a vandal-resistant access plate for added peace of mind.

### ALL-WEATHER CAPABILITIES

Fully engineered system with the pneumatic operated freeze-resistant valve installed below frost line to drain water to non-freezing depth allowing fountain to function year-round. Assembly can be lifted to surface and lowered back into casing for easy maintenance without disturbing the fountain.

### PUSH BUTTON

Polished chrome-plated push-button requires less than 5 lbs. (2.7 kg) of push force to activate.



## SPECIFICATIONS

Model 3380FR barrier-free freeze-resistant pedestal drinking fountain shall include an 18 gauge Type 304 Stainless Steel satin finish basin with integral swirl design, polished chrome-plated brass push-button, polished chrome-plated brass vandal-resistant bubbler head, chrome-plated brass vandal-resistant waste strainer, 11 gauge galvanized substrate steel pedestal with green powder-coating, integral mounting plate, and 1-1/2" O.D. tailpiece.

## OPTIONS

To see all options for this model, visit [www.hawsc.com](http://www.hawsc.com)

## APPLICATIONS

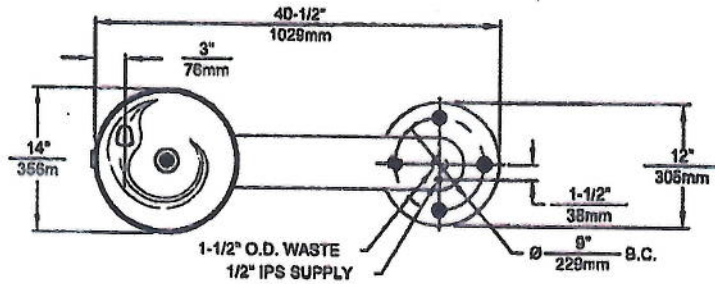
Perfect for either public or private outdoor settings, the 3380FR is a great fit in areas where aesthetics are important to the overall appeal of the architecture. Suitable in areas where weather conditions exist, this series stands strong as a nice addition to any community. Powder-coated finish helps to maintain the fountain's overall appeal so it remains looking as new as it did when it was installed. This type of pedestal drinking fountain may also be placed in a variety of settings such as: parks, schools, and other outdoor environments around office buildings where the temperature may drop into freezing conditions.

Model meets all current Federal Regulations for the disabled including those in the Americans with Disabilities Act. Haws manufactures drinking fountains and electric water coolers to be lead-free by all known definitions including NSF/ANSI Standard 61, Section 9, California Proposition 65, and the Federal Safe Drinking Water Act. Product is compliant to California Health and Safety Code 116875 (AB 1953-2006).

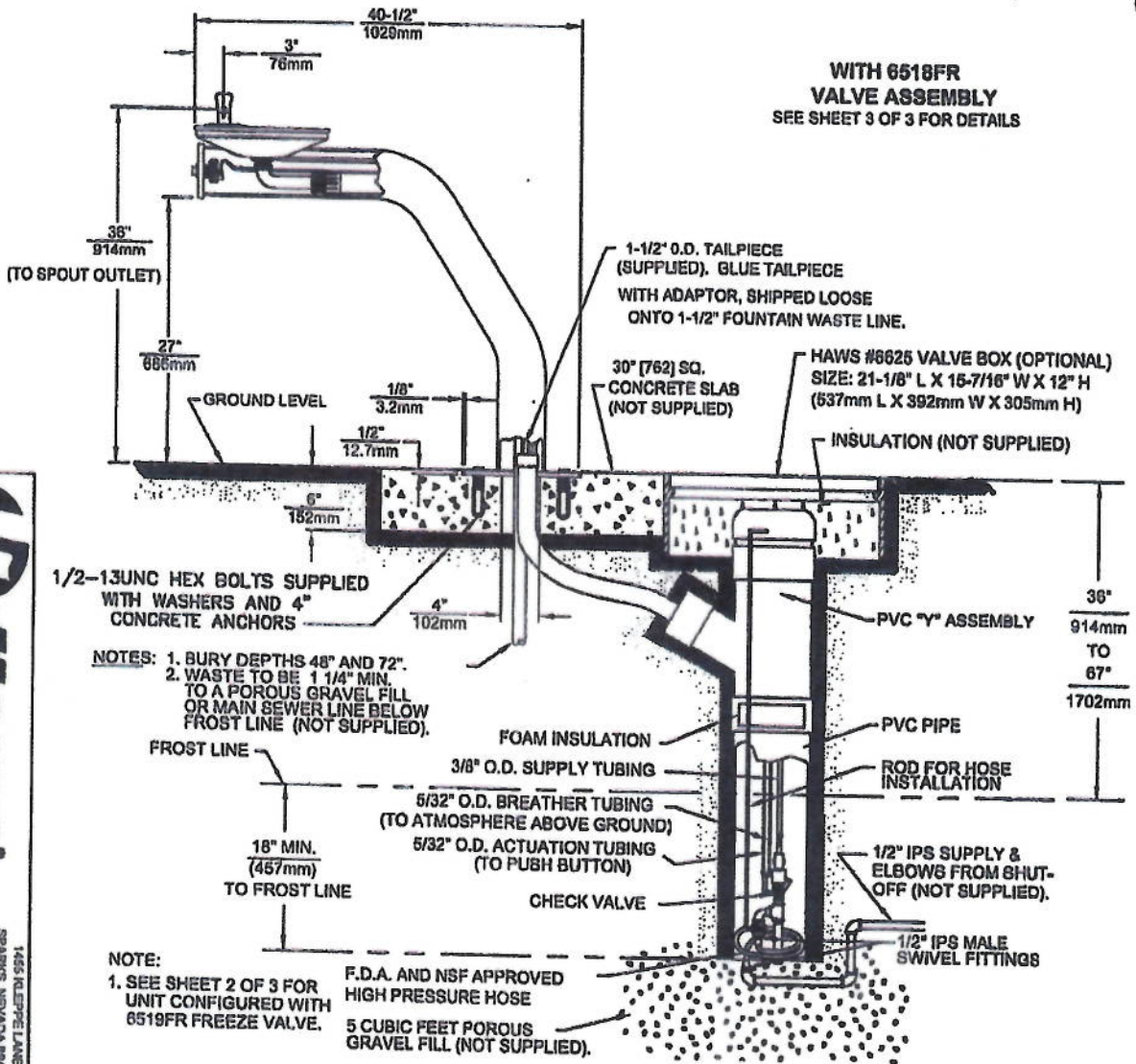


#13

### 3380FR/3380GFR WITH 6518FR (SEE SHEET 2 OF 3 FOR 6519FR INSTALLATION)



**WITH 6518FR  
VALVE ASSEMBLY**  
SEE SHEET 3 OF 3 FOR DETAILS



1/2-13UNC HEX BOLTS SUPPLIED  
WITH WASHERS AND 4"  
CONCRETE ANCHORS

NOTES: 1. BURY DEPTHS 48" AND 72".  
2. WASTE TO BE 1 1/4" MIN.  
TO A POROUS GRAVEL FILL  
OR MAIN SEWER LINE BELOW  
FROST LINE (NOT SUPPLIED).

NOTE:  
1. SEE SHEET 2 OF 3 FOR  
UNIT CONFIGURED WITH  
6519FR FREEZE VALVE.

F.D.A. AND NSF APPROVED  
HIGH PRESSURE HOSE  
5 CUBIC FEET POROUS  
GRAVEL FILL (NOT SUPPLIED).

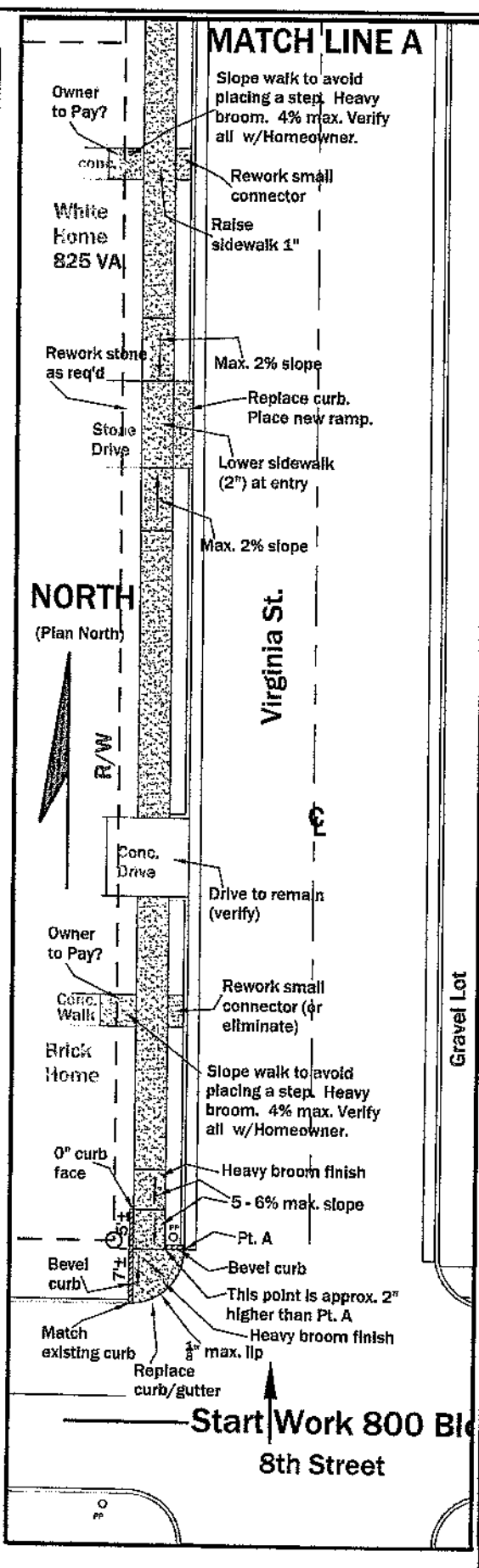
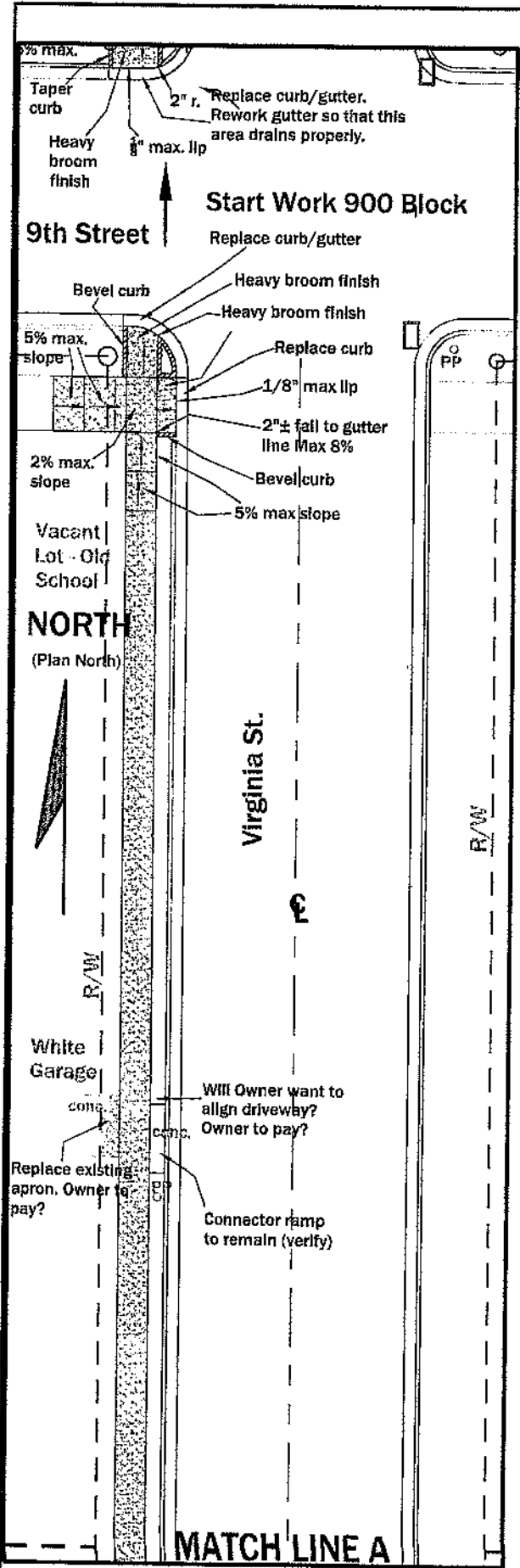
©2010 Haws Corporation - All Rights Reserved HAWS® and other trademarks used in these materials are the exclusive property of Haws Corporation.



1465 WILPEPE LANE  
SPARKS, NEVADA 89431  
(775) 350-4712 FAX (775) 350-7426  
EMAIL: HAWS@HAWS.COM  
WEBSITE: WWW.HAWS.COM

3380FR/3380GFR/3380/6518FR  
3380GFR/3380GFR/3380/6519FR  
0002077370 D  
10269000





**Sidewalk Plan 800 Block**

1" = 20'

**Town of Ferdinand**  
Virginia Street Sidewalk Improvements  
800 Block - West side  
Ferdinand, Indiana

**Engineer Associates, Inc.**  
645 Main Street, #201  
Tell City, Indiana 47586  
Telephone: 812-547-1100  
Cell: 812-719-8345  
Indy phone: 317-841-3113  
KLSimpsonPE@Comcast.net

Kenneth Leo Simpson, P.E.

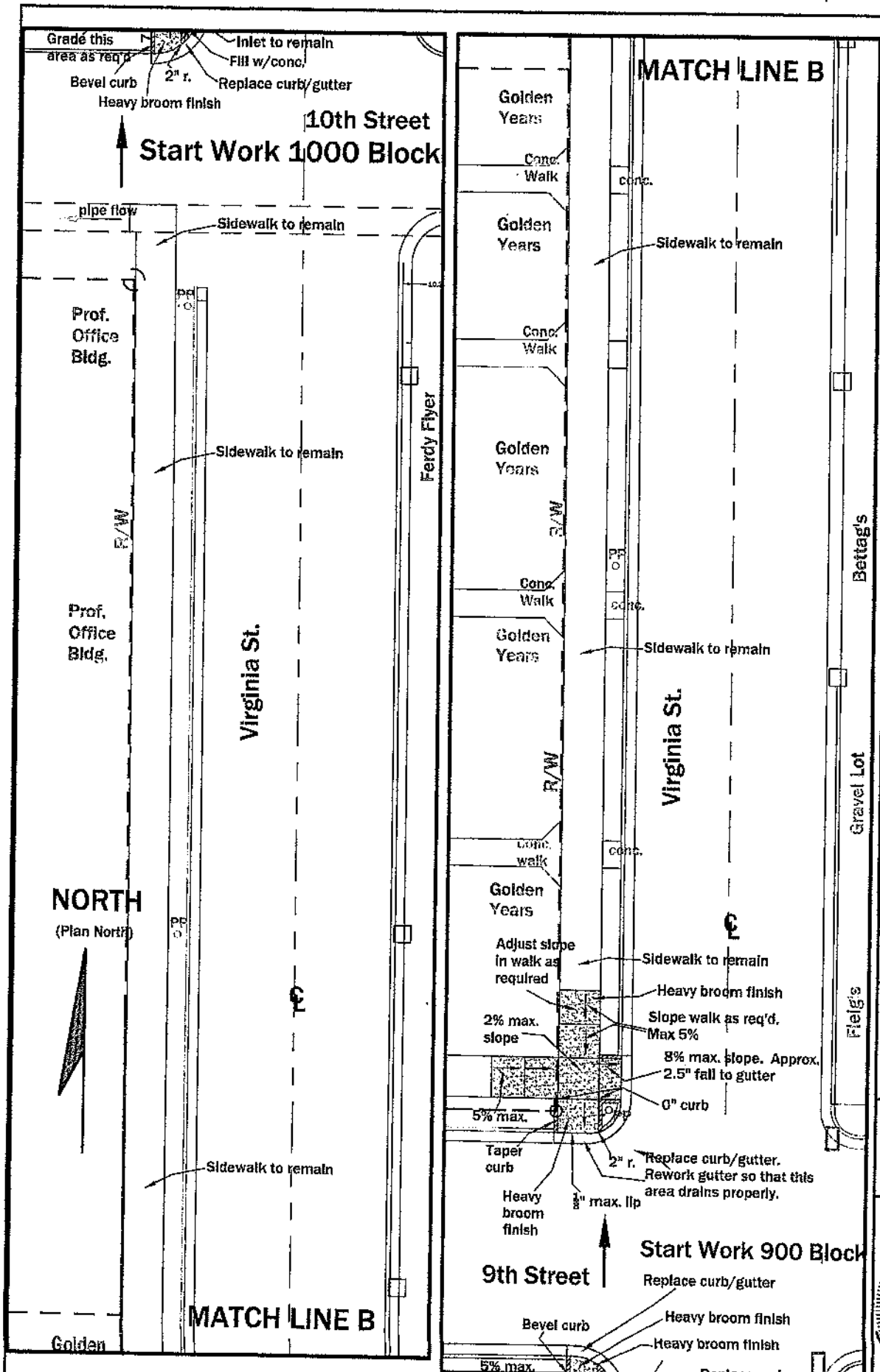
Drawn: KLS  
Drawing Date: 11/24/15  
Revision Date:

**Plot Information:**  
File Name: Ferd. Sdwk. Virginia St.  
Plot Date:  
CAD Operator: KLS



Seal

**C1**



**Town of Ferdinand**  
 Virginia Street Sidewalk Improvements  
 900 Block - West side  
 Ferdinand, Indiana

**Engineer Associates, Inc.**  
 645 Main Street, #201  
 Tell City, Indiana 47586  
 Telephone: 812-547-1100  
 Cell: 812-719-8345  
 Indy phone: 317-841-3113  
 KLSimpsonPE@Comcast.net

Kenneth Leo Simpson, P.E.

Drawn: KLS  
 Drawing Date: 11/24/15  
 Revision Date:

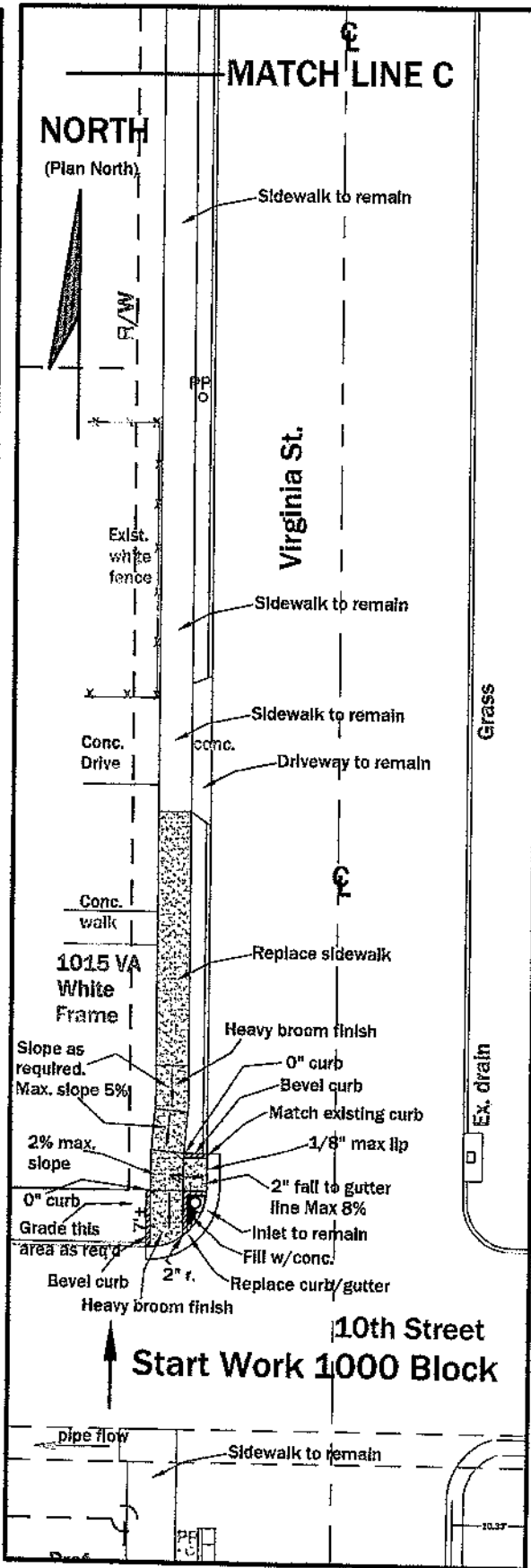
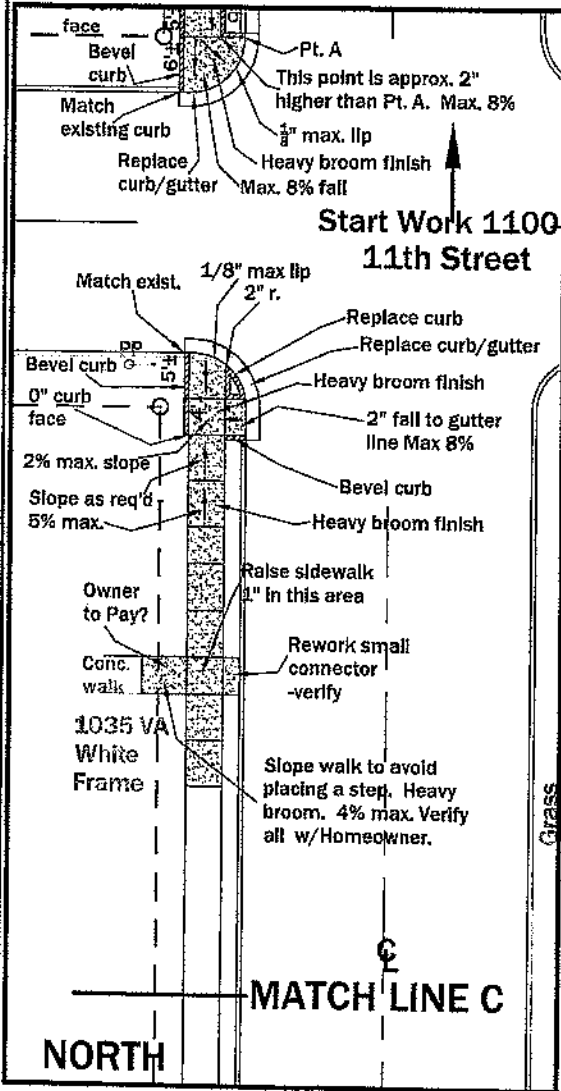
**Plot Information:**  
 File Name: Ferd. Sdwalk.Virginia St.  
 Plot Date:  
 CAD Operator: KLS



Seal

**C2**

# 16



### Sidewalk Plan 1000 Block

1" = 20'

**Town of Ferdinand**  
**Virginia Street Sidewalk Improvements**  
**1000 Block - West side**  
**Ferdinand, Indiana**

**Engineer Associates, Inc.**  
 645 Main Street, #201  
 Tell City, Indiana 47586  
 Telephone: 812-547-1100  
 Cell: 812-719-8345  
 Indy phone: 317-841-3113  
 KLSimpsonPE@Comcast.net

Kenneth Leo Simpson, P.E.

Drawn: KLS  
 Drawing Date: 11/24/15  
 Revision Date:

**Plot Information:**  
 File Name: Ferd. Sdwk.Virginia St.  
 Plot Date:  
 CAD Operator: KLS

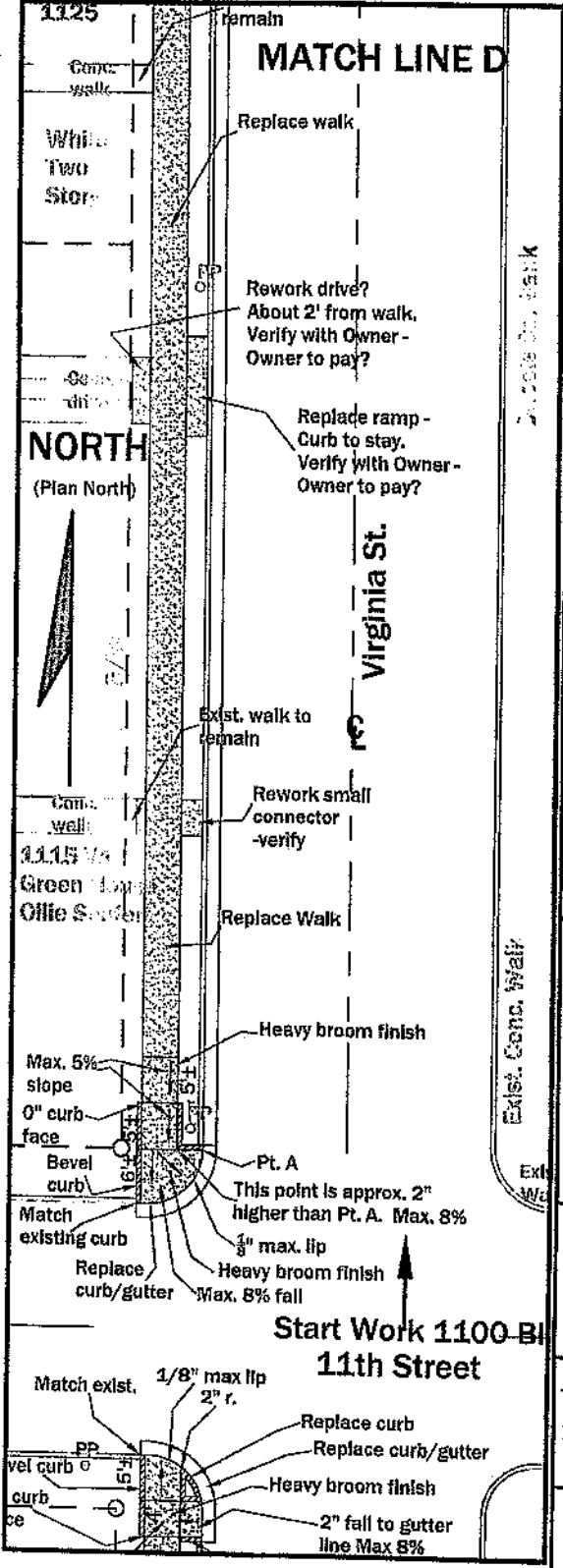
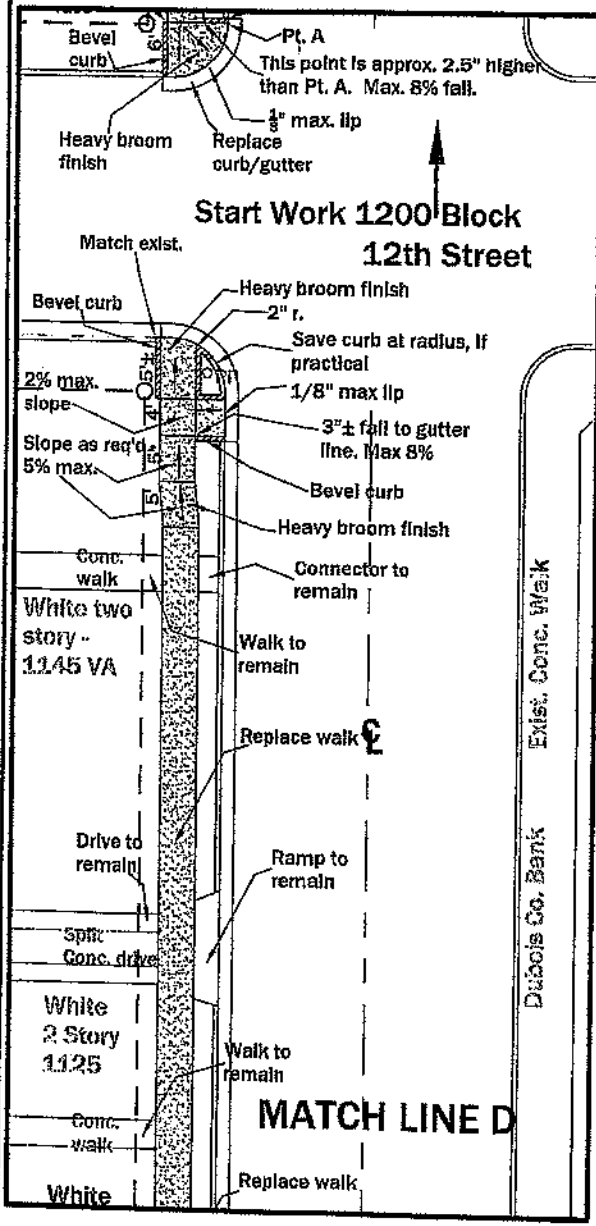


Seal

Sheet number
<b>C3</b>

Attachment # 16

#17



**Sidewalk Plan 1100 Block**  
1" = 20'

**Town of Ferdinand**  
Virginia Street Sidewalk Improvements  
1100 Block - West side  
Ferdinand, Indiana

**Engineer Associates, Inc.**  
645 Main Street, #201  
Tell City, Indiana 47586  
Telephone: 812-547-1100  
Cell: 812-719-8345  
Indy phone: 317-841-3113  
KLSimpsonPE@Comcast.net  
  
Kenneth Leo Simpson, P.E.

Drawn: KLS  
Drawing Date: 11/24/15  
Revision Date:

**Plot Information:**  
File Name: Ferd. Sdwk.Virginia St.  
Plot Date:  
CAD Operator: KLS



**C4**

Attachment #17

#18

**ENGINEER ASSOCIATES, Inc.**

Since 1990

645 Main Street, Suite 201  
Tell City, Indiana 47586

(812) 547-1100  
e-mail: [ksimpsonpe@comcast.net](mailto:ksimpsonpe@comcast.net)

Kenneth Leo Simpson, P.E.  
P.E. License in Indiana & Kentucky

December 1, 2015

Town of Ferdinand  
2065 Main Street  
Ferdinand, IN 47532

Attn: Tom Lueken

Re: **Sidewalk replacement**  
**800 to 1600 Virginia Street**  
**Ferdinand, IN**

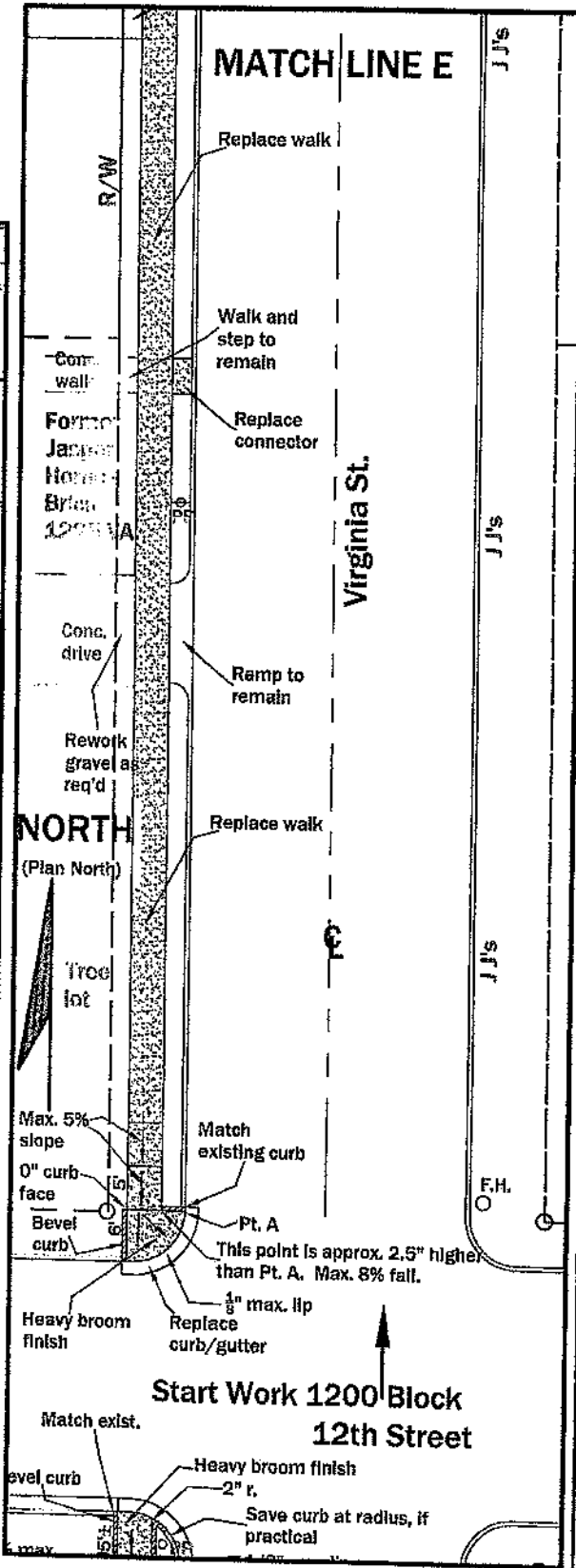
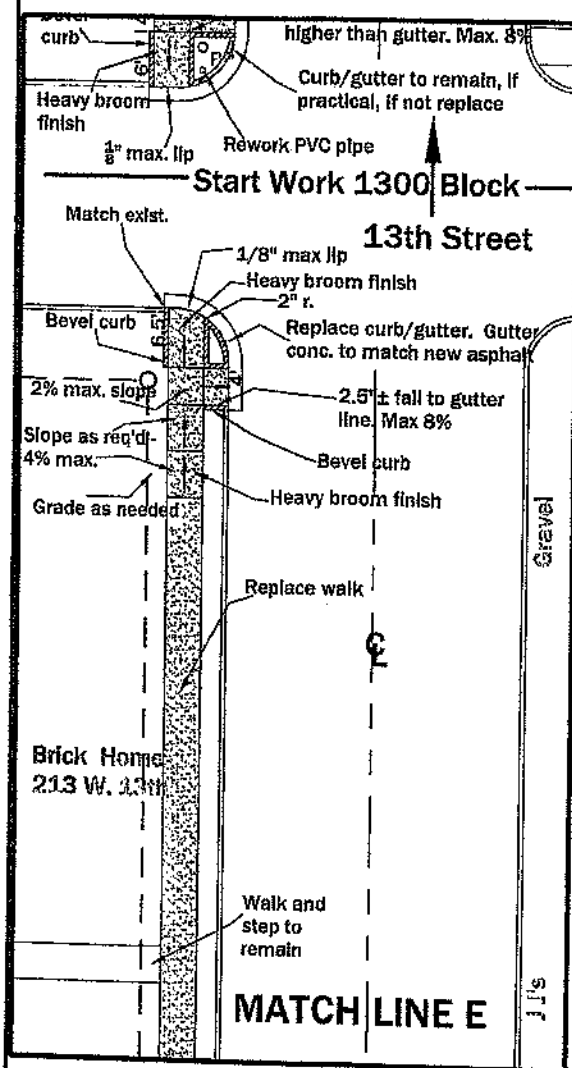
**INVOICE**

For engineering services, performed during the period October 30, 2015 through December 1, 2015, to provide a design for replacing the sidewalks along the West side of Virginia Street, including creating pages T1, C1 - C9, and associated services.

**Please remit \$4,900.00**

Net due 30 days

Attachment #18



**Town of Ferdinand**  
**Virginia Street Sidewalk Improvements**  
**1200 Block - West side**  
**Ferdinand, Indiana**

**Engineer Associates, Inc.**  
 645 Main Street, #201  
 Tell City, Indiana 47586  
 Telephone: 812-547-1100  
 Cell: 812-719-8345  
 Indy phone: 317-841-3113  
 KLSimpsonPE@Comcast.net

Kenneth Leo Simpson, P.E.

Drawn: KLS  
 Drawing Date: 11/24/15  
 Revision Date:

**Plot Information:**  
 File Name: Ferd. Sdwik.Virginia St.  
 Plot Date:  
 CAD Operator: KLS



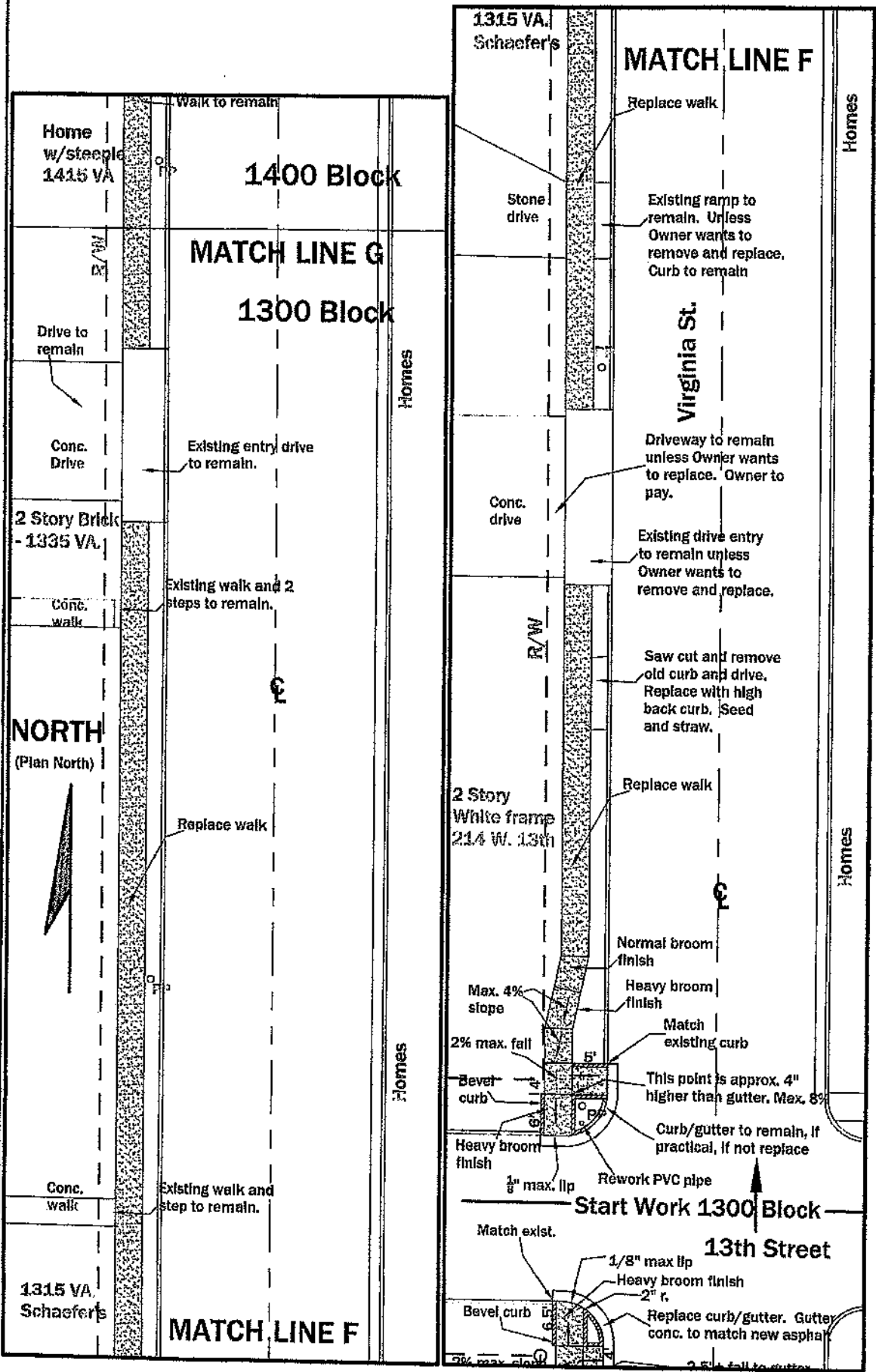
**Sidewalk Plan 1200 Block**

1" = 20'

**C5**

Alt Attachment #19

111111



**Town of Ferdinand**  
**Virginia Street Sidewalk Improvements**  
**1300 Block - West side**  
**Ferdinand, Indiana**

**Engineer Associates, Inc.**  
 645 Main Street, #201  
 Tell City, Indiana 47586  
 Telephone: 812-547-1100  
 Cell: 812-719-8345  
 Indy phone: 317-841-3113  
 KLSimpsonPE@Comcast.net

Kenneth Leo Simpson, P.E.

Drawn: KLS  
 Drawing Date: 11/24/15  
 Revision Date:

**Plot information:**  
 File Name: Ferd. Sdwlk.Virginia St.  
 Plot Date:  
 CAD Operator: KLS

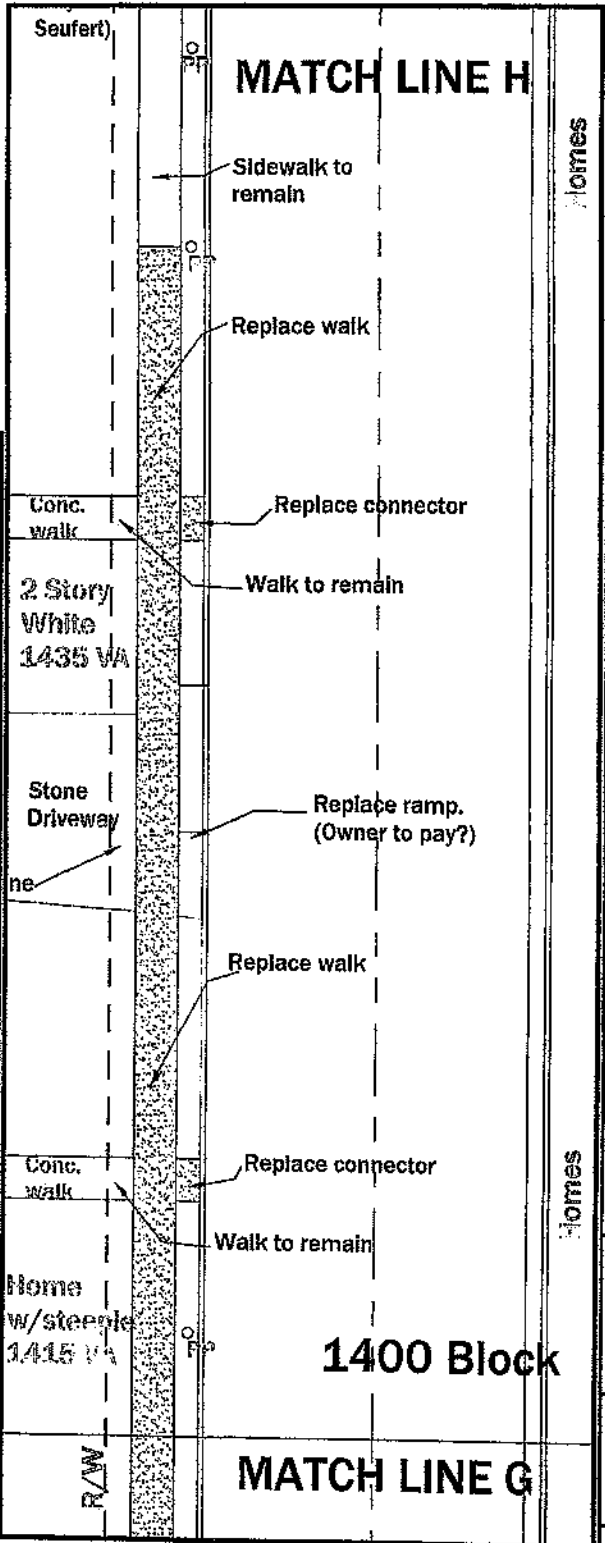
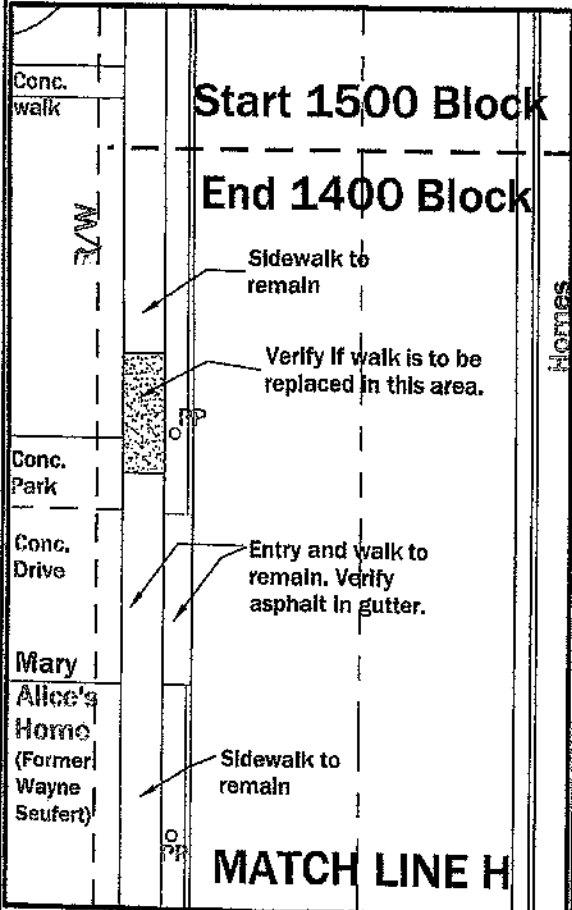


**Sidewalk Plan 1300 Block**

1" = 20'

**C6**

ALT Attachment #20



**Town of Ferdinand**  
 Virginia Street Sidewalk Improvements  
 1400 Block - West side  
 Ferdinand, Indiana

**Engineer Associates, Inc.**  
 645 Main Street, #201  
 Tell City, Indiana 47586  
 Telephone: 812-547-1100  
 Cell: 812-719-8345  
 Indy phone: 317-841-3113  
 KLSimpsonPE@Comcast.net

Kenneth Leo Simpson, P.E.

Drawn: KLS  
 Drawing Date: 11/24/15  
 Revision Date:

**Plot Information:**  
 File Name: Ferd. Sdwk.Virginia St.  
 Plot Date:  
 CAD Operator: KLS



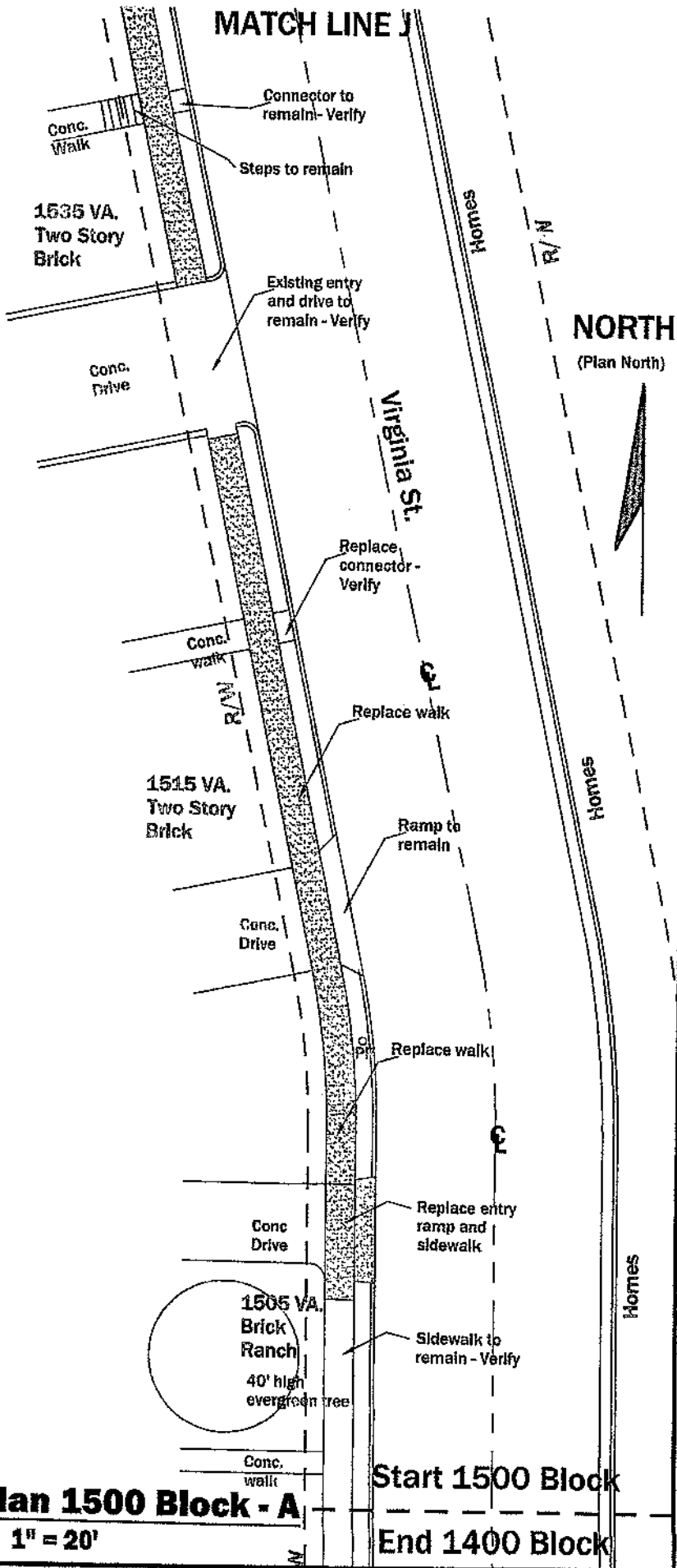
**Sidewalk Plan 1400 Block**  
 1" = 20'

Alt Attachment #21



AIT #22

MATCH LINE J



**Town of Ferdinand**  
**Virginia Street Sidewalk Improvements**  
**1500 Block (A) - West side**  
**Ferdinand, Indiana**

**Engineer Associates, Inc.**  
 645 Main Street, #201  
 Tell City, Indiana 47586  
 Telephone: 812-547-1100  
 Cell: 812-719-8345  
 Indy phone: 317-841-3113  
 KLSimpsonPE@Comcast.net

Kenneth Leo Simpson, P.E.

Drawn: KLS  
 Drawing Date: 11/24/15  
 Revision Date:

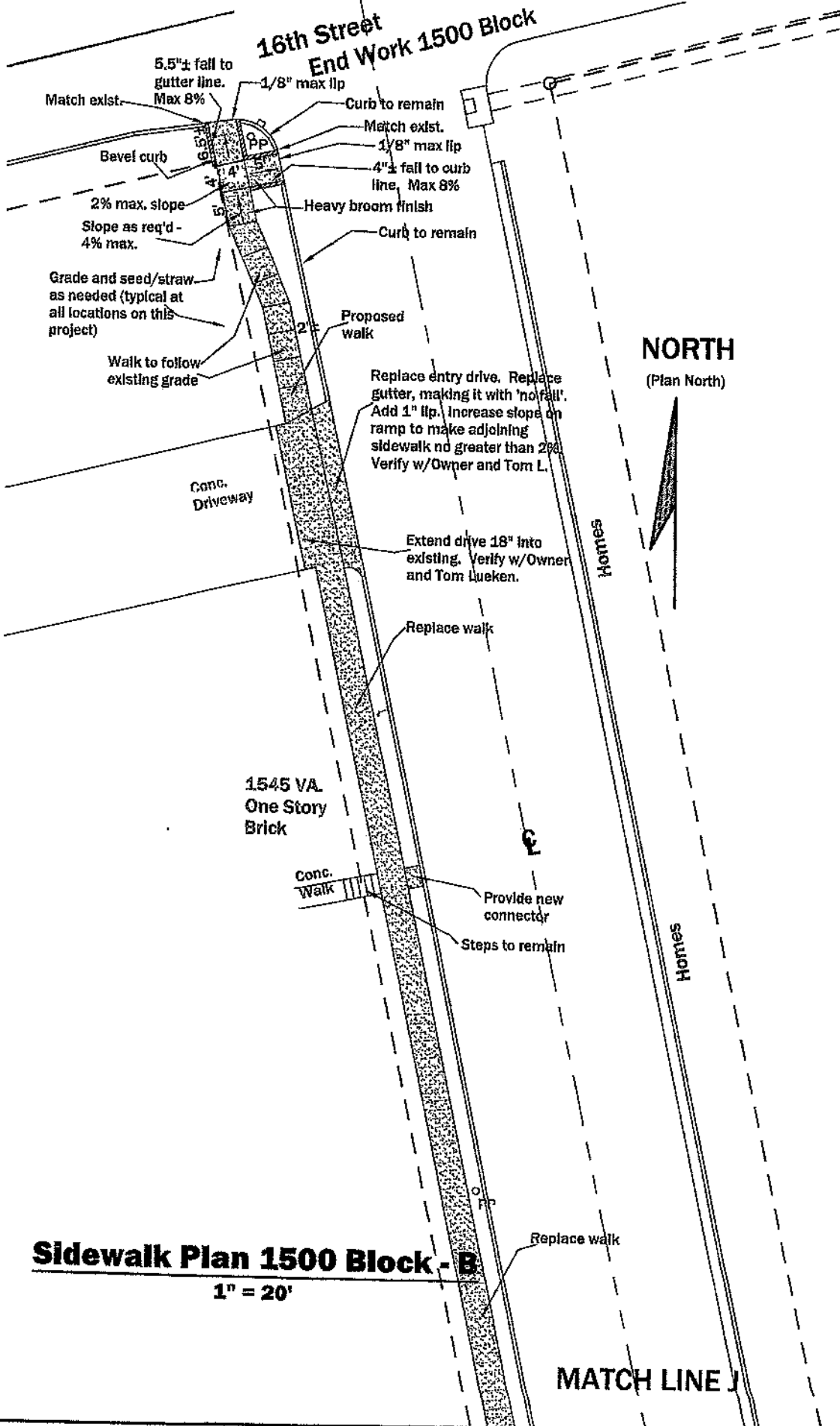
**Plot Information:**  
 File Name: Ferd. Sdwlk.Virginia St.  
 Plot Date:  
 CAD Operator: KLS



**C8**

AIT Attachment 22

Alt # 23



NORTH  
(Plan North)

**Town of Ferdinand**  
 Virginia Street Sidewalk Improvements  
 1500 Block (B) - West side  
 Ferdinand, Indiana

**Engineer Associates, Inc.**  
 645 Main Street, #201  
 Tell City, Indiana 47586  
 Telephone: 812-547-1100  
 Cell: 812-719-8345  
 Indy phone: 317-841-3113  
 KLSimpsonPE@Comcast.net

Kenneth Leo Simpson, P.E.

Drawn: KLS  
 Drawing Date: 11/24/15  
 Revision Date:

**Plot Information:**  
 File Name: Ferd. Sdwk, Virginia St.  
 Plot Date:  
 CAD Operator: KLS



C9

**Sidewalk Plan 1500 Block - B**  
 1" = 20'

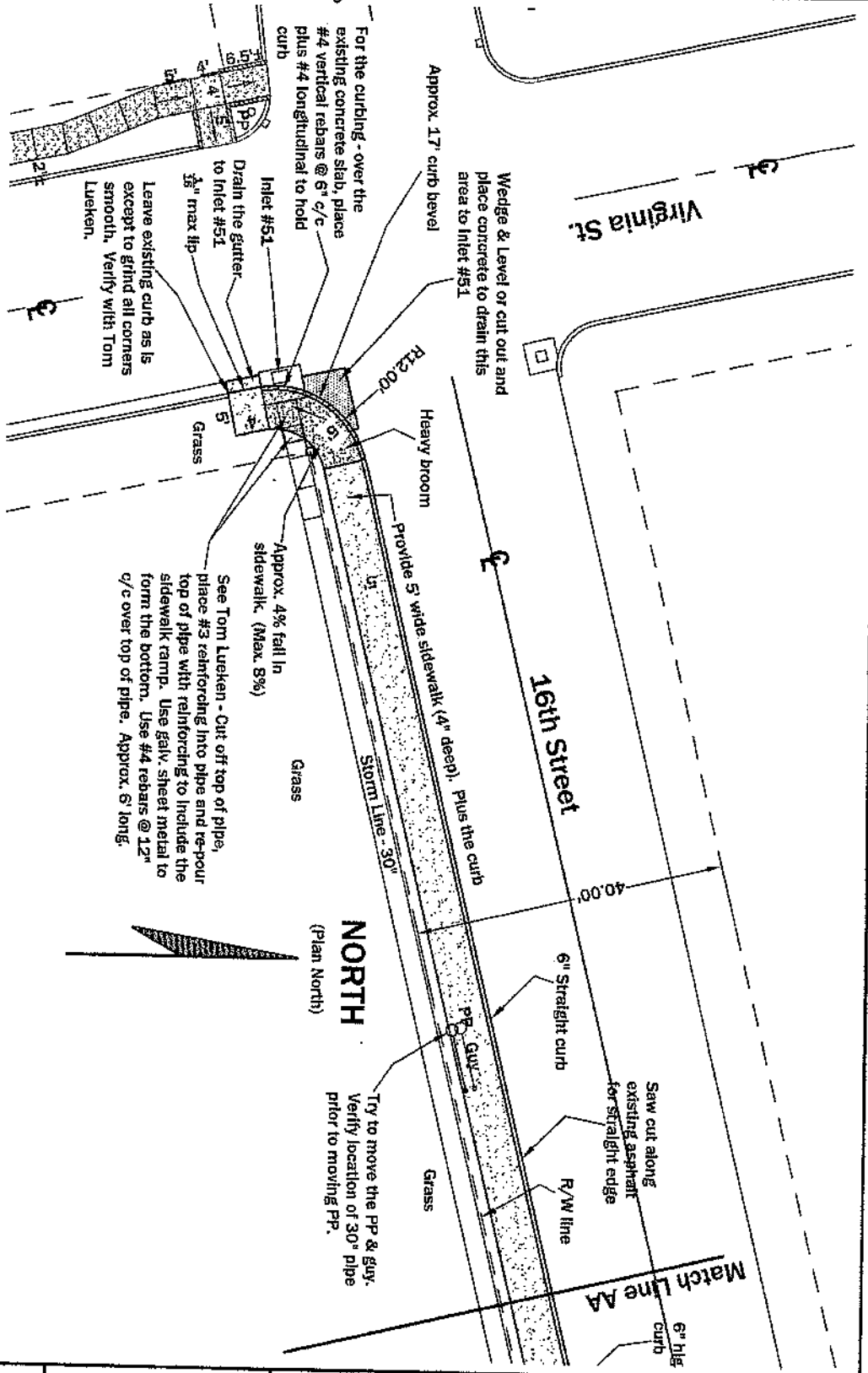
MATCH LINE J

Alt Attachment # 23

Project 00

**Sidewalk Plan - 16th Street (West End near Virginia Street)**

1" = 20'



**Notes:**

1. Keep sidewalk  $\frac{1}{4}$ " above curb for setting.
2. Provide thin exp. ft. between sidewalk and curb
3. Sidewalk to be 4" deep over 2" comp. granular fill

**Index of Drawings**

- A1 West End near Virginia St
- A2 East End near Main Street

**Town of Ferdinand**  
**16th Street Sidewalk Improvements**  
**Between Virginia Street & Main Street**  
**Ferdinand, Indiana**

*Attachment 24*

**Engineer Associates, Inc.**

645 Main Street, #201  
 Tell City, Indiana 47586  
 Telephone: 812-547-1100  
 Cell: 812-719-8345  
 Indy phone: 317-841-3113  
 KLSimpsonPE@Comcast.net

Kenneth Leo Simpson, P.E.

Drawn: KLS

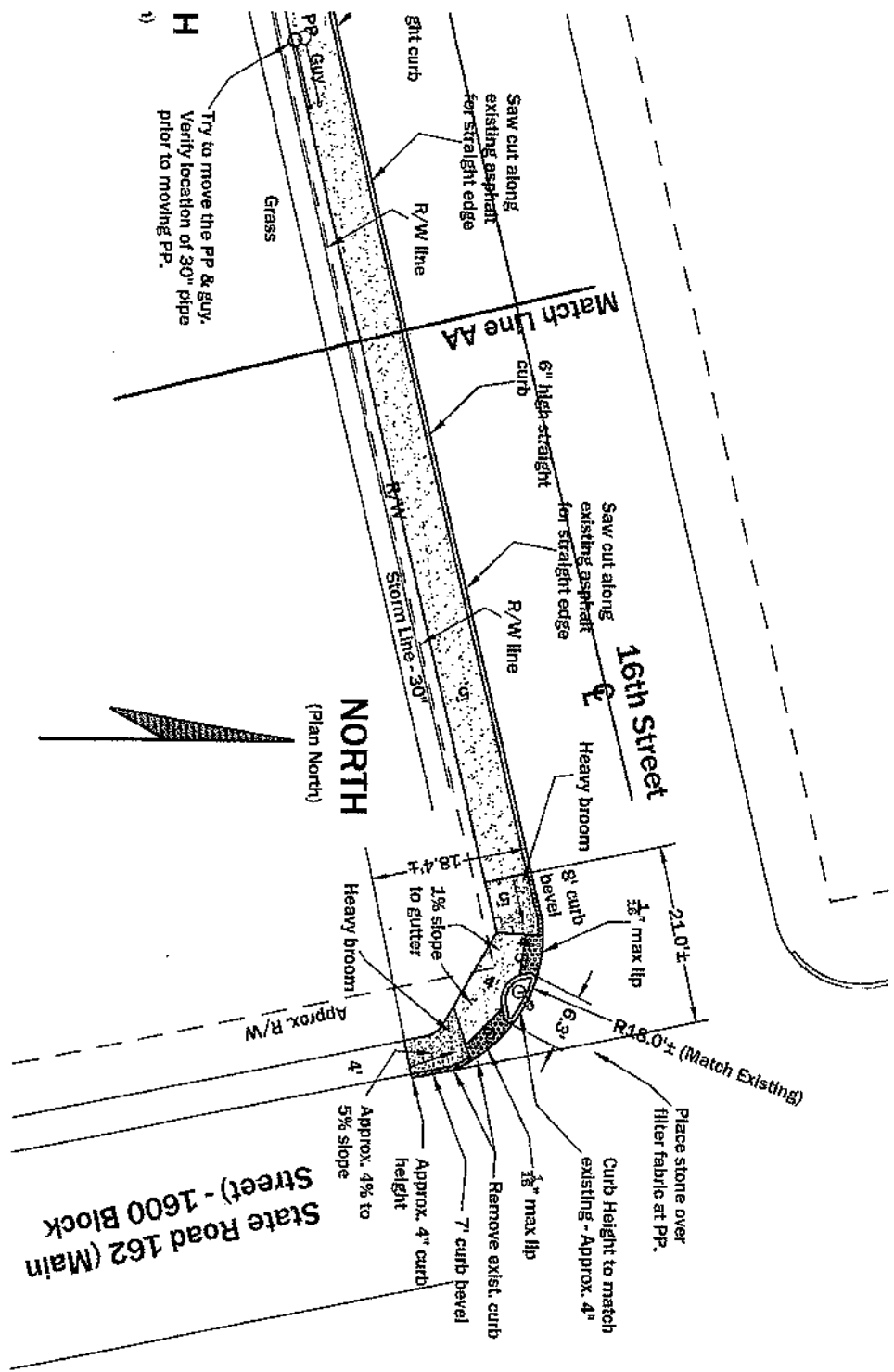
Drawing Date: 5/25/16

Revision Date:

Plot Information:

File Name: Ferd\_16th St. sdwk

KLS  
 KENNETH LEO SIMPSON  
 REGISTERED PROFESSIONAL ENGINEER  
 STATE OF INDIANA  
 No. 20867  
 Seal **A1**



**Sidewalk Plan - 16th Street (East End near Main Street)**

1" = 20'

**Town of Ferdinand**  
**16th Street Sidewalk Improvements**  
**Between Virginia Street & Main Street**  
**Ferdinand, Indiana**

*Attachment #25*

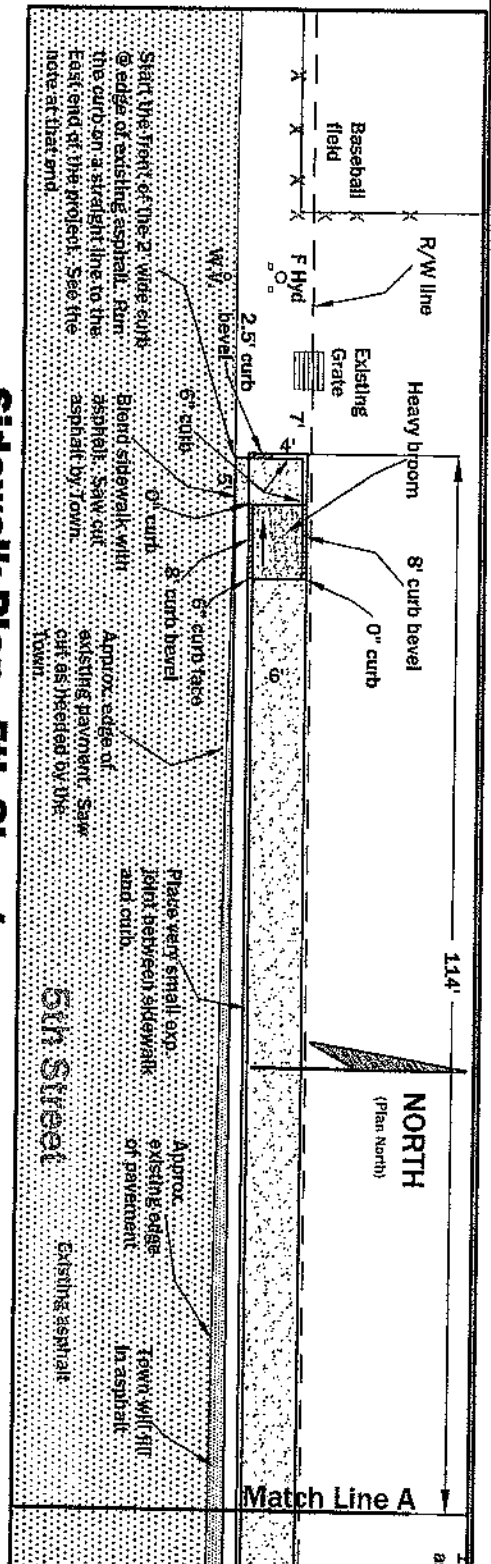
**Engineer Associates, Inc.**  
 645 Main Street, #201  
 Tell City, Indiana 47586  
 Telephone: 812-547-1100  
 Cell: 812-719-8345  
 Indy phone: 317-844-3113  
 KLSimpsonPE@Comcast.net

Kenneth Leo Simpson, P.E.  
 Drawn: KLS  
 Drawing Date: 5/25/16  
 Revision Date:

Plot Information:  
 File Name: Ferd\_16th St. Sidwk

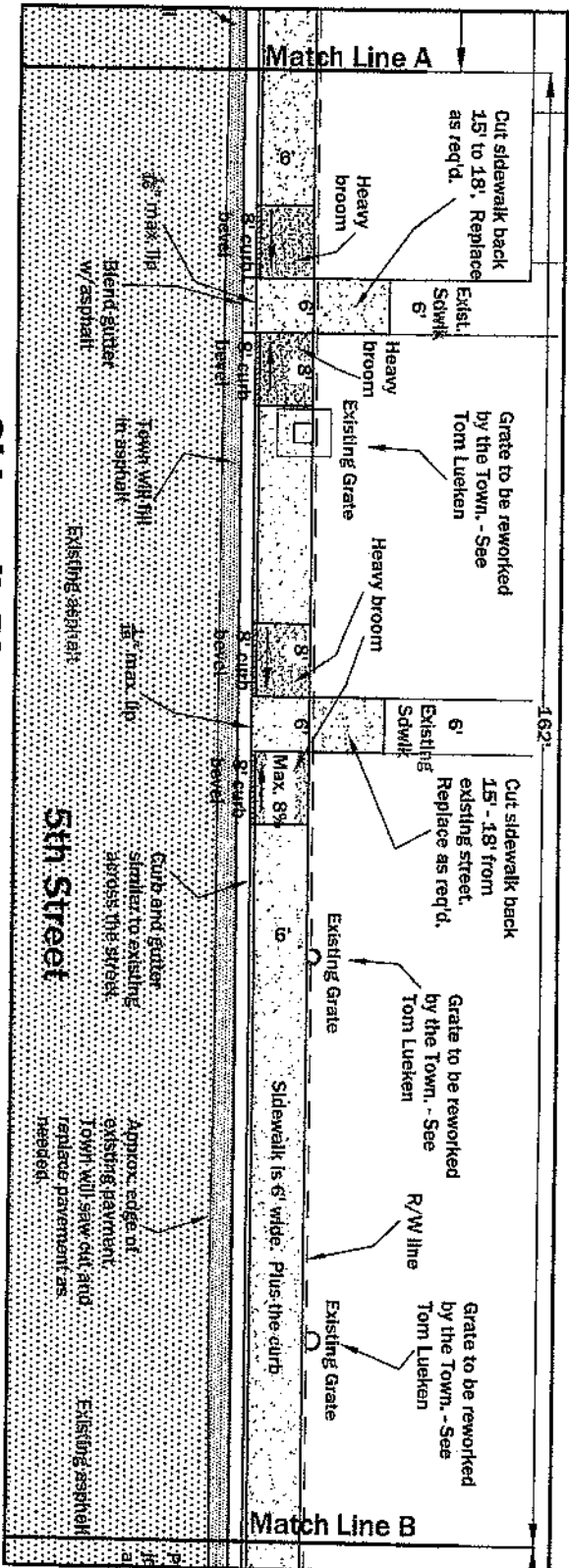
**KLSimpson**  
**KENNETH LEO SIMPSON**  
 REGISTERED  
 No. 20867  
 STATE OF INDIANA  
 PROFESSIONAL ENGINEER  
 Seal **A2**

PROJECT 1



**Sidewalk Plan - 5th Street (Part 1 of 4)**

1" = 20'



**Sidewalk Plan - 5th Street (Part 2 of 4)**

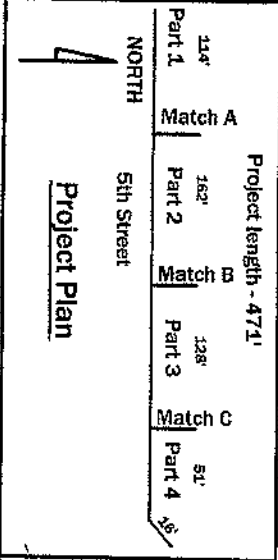
1" = 20'

**Notes:**

1. Keep sidewalk  $\frac{1}{2}$ " above curb for setting.
2. Provide thin exp. ft. between sidewalk and curb
3. Sidewalk to be 4" deep over 2" comp. granular fill

**Index of Drawings**

- C1 Part 1 of 4 and 2 of 4
- C2 Part 3 of 4 and 4 of 4



**Town of Ferdinand**  
**5th Street Sidewalk Improvements**  
 Near 5th Street Park  
 Ferdinand, Indiana

*Attachment #26*

**Engineer Associates, Inc.**  
 645 Main Street #201  
 Tell City, Indiana 47586  
 Telephone: 812-547-1100  
 Cell: 812-719-8345  
 Indy phone: 317-841-3113  
 KLSimpsonPE@comcast.net

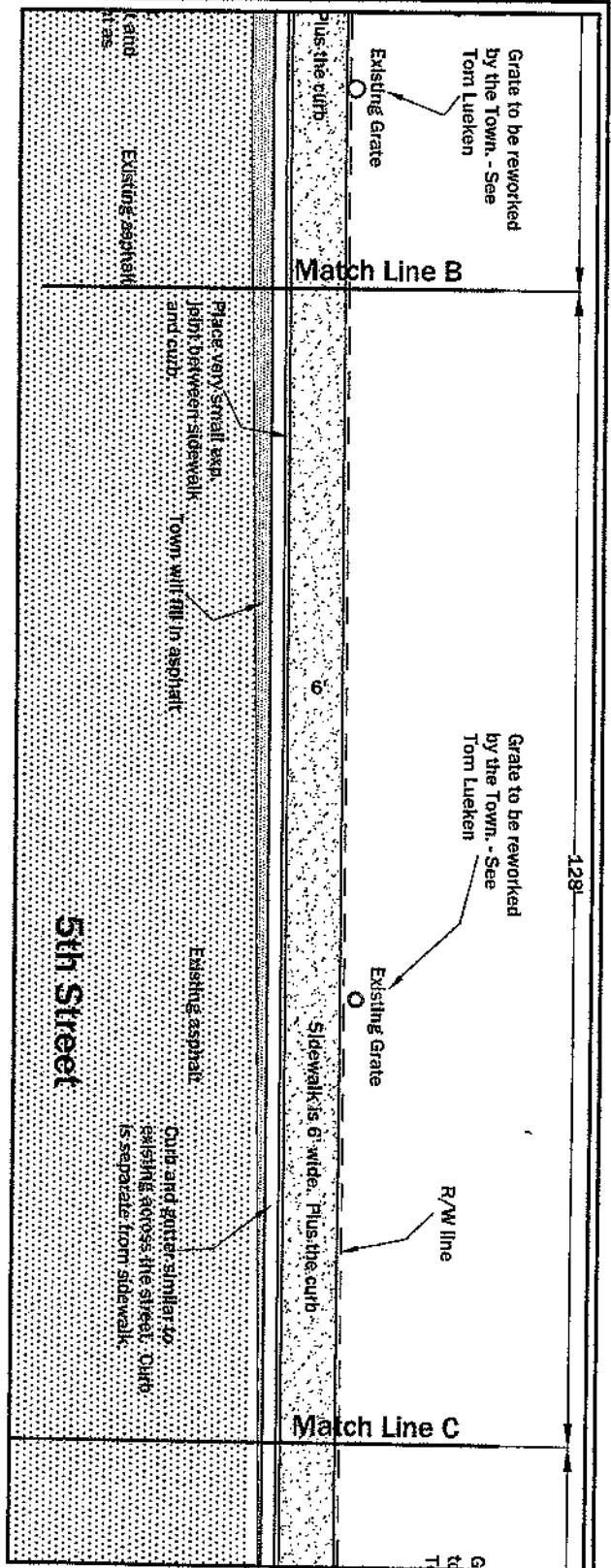
**Kenneth Leo Simpson, P.E.**

Drawn: KLS  
 Drawing Date: 5/24/16  
 Revision Date:

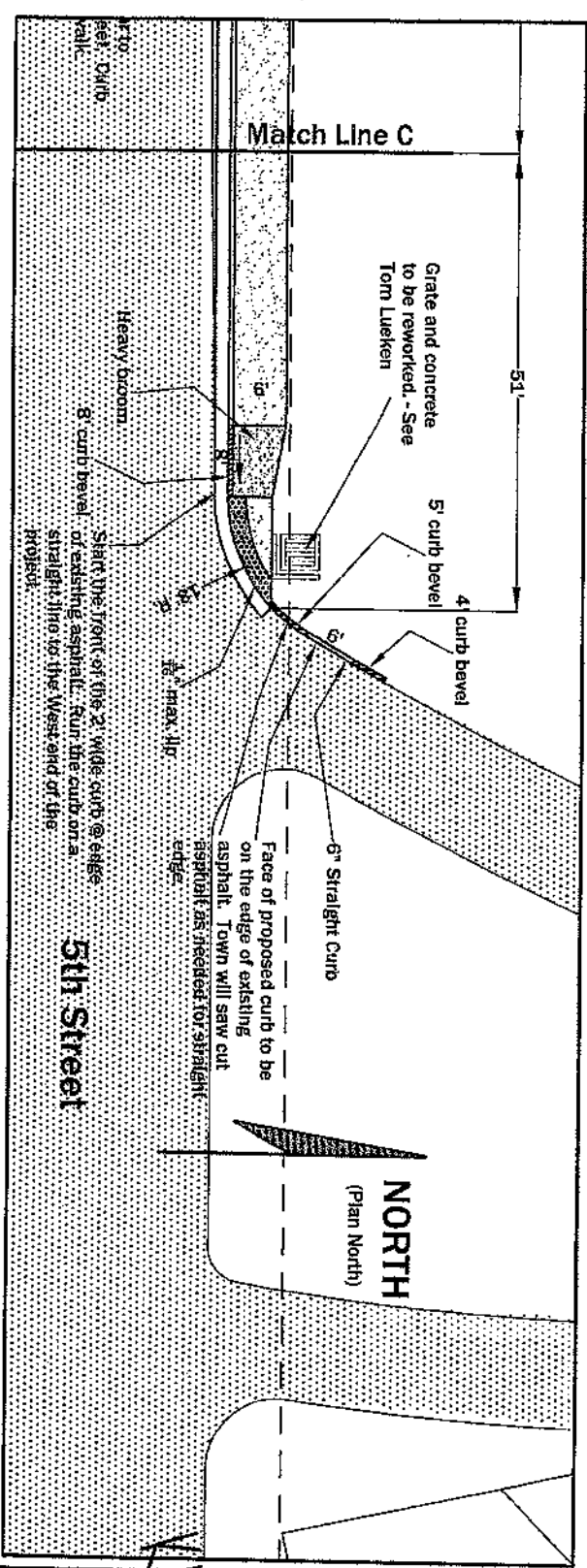
Plot Information:  
 File Name: Ferd. 5th St. Sidwk

Seal **C1**





**Sidewalk Plan - 5th Street (Part 3 of 4)**  
1" = 20'



**Sidewalk Plan - 5th Street (Part 4 of 4)**  
1" = 20'

**Town of Ferdinand**  
5th Street Sidewalk Improvements  
Near 5th Street Park  
Ferdinand, Indiana

*Attachment #27*

Engineer Associates, Inc.  
645 Main Street #201  
Tell City, Indiana 47586  
Telephone: 812-547-1100  
Cell: 812-719-8345  
Mob phone: 317-841-3113  
KLSimpsonPE@Comcast.net

Kenneth Leo Simpson, P.E.

Drawn: KLS  
Drawing Date: 5/24/16  
Revision Date:

Plot Information:  
File Name: Ferd. 5th St. Sidwk

**Simpson**  
KENNETH LEO SIMPSON  
REGISTERED PROFESSIONAL ENGINEER  
STATE OF INDIANA  
No. 20867  
Seal **C2**